

# elco

COMPANY PROFILE



CUTTING-EDGE BURNERS  
FOR HEATING AND  
INDUSTRIAL APPLICATIONS

ELCO always looks for the best technologies and develops new ones to improve the efficiency of its solutions.

”



# Heritage

---

- 1928** The company E. Looser & Co. has been founded in Vilters (Switzerland) by Emil and Elsa Looser
- 1930** Production of the first semiautomatic fuel oil blown air burner for furnaces
- 1938** First exports to Belgium and Sweden
- 1962** Production of the first blown air gas burners in the plant of Ravensburg (Germany)
- 1979** Production of burner N°1.000.000
- 1988** Opening of the new production site in Vilters with a capacity of 15.000 m<sup>3</sup>, including a logistics center
- 1994** Merger with the German company Klöckner and French Cuenod Thermotechnique. The new group employs 3.100 persons. Doubling of sales
- 2001** The Italian MTS Group (today Ariston Group) acquires the company
- 2009** Beginning of a project of renovation of the product range with the progressive introduction of a new platform for VECTRON burners and two brand new burner ranges: NEXTRON and EK EVO
- 2017** The ELCO range is extended thanks to the introduction of the new RPD models up to 80 MW
- 2018** 90<sup>th</sup> anniversary of ELCO

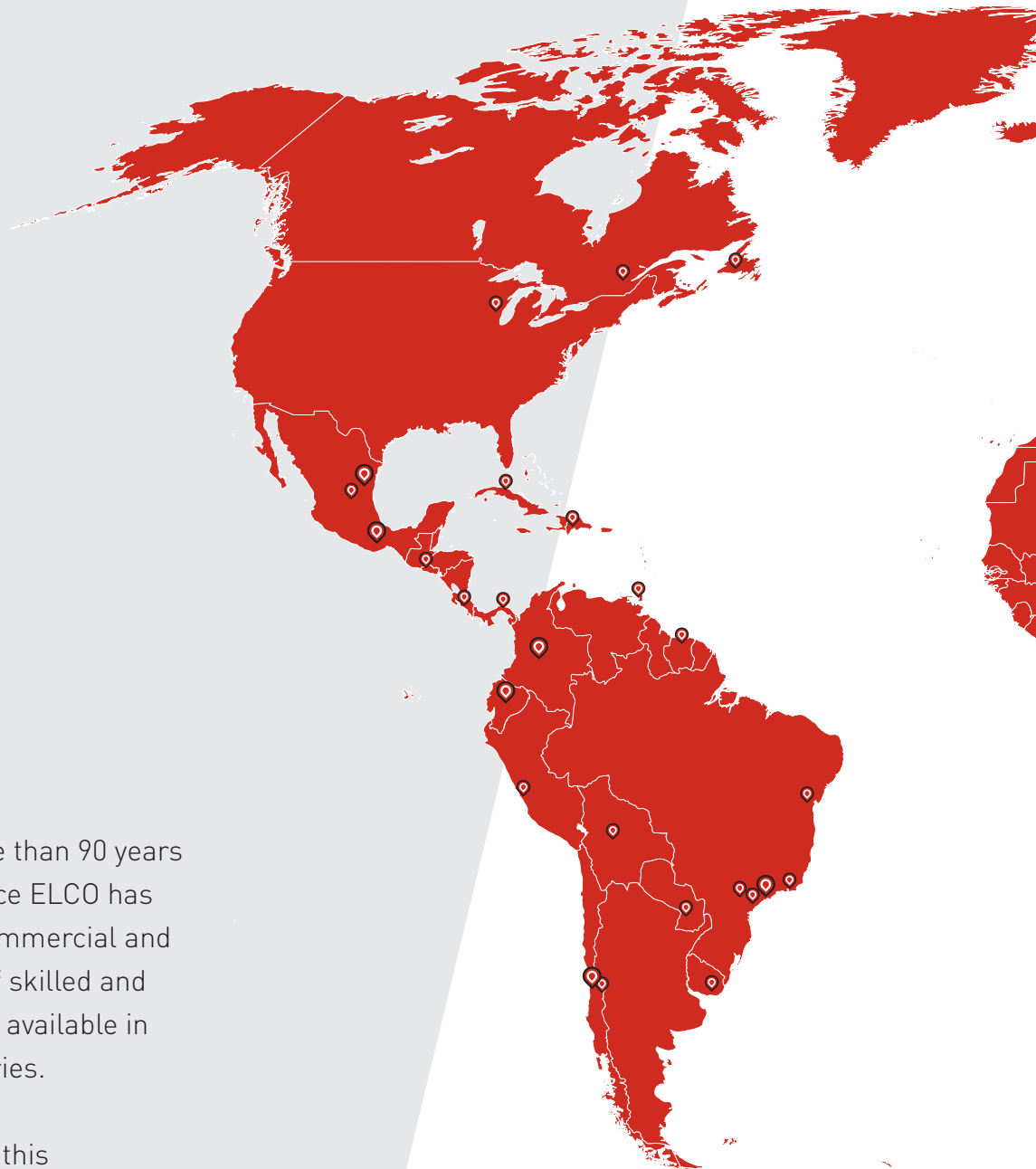


# About us

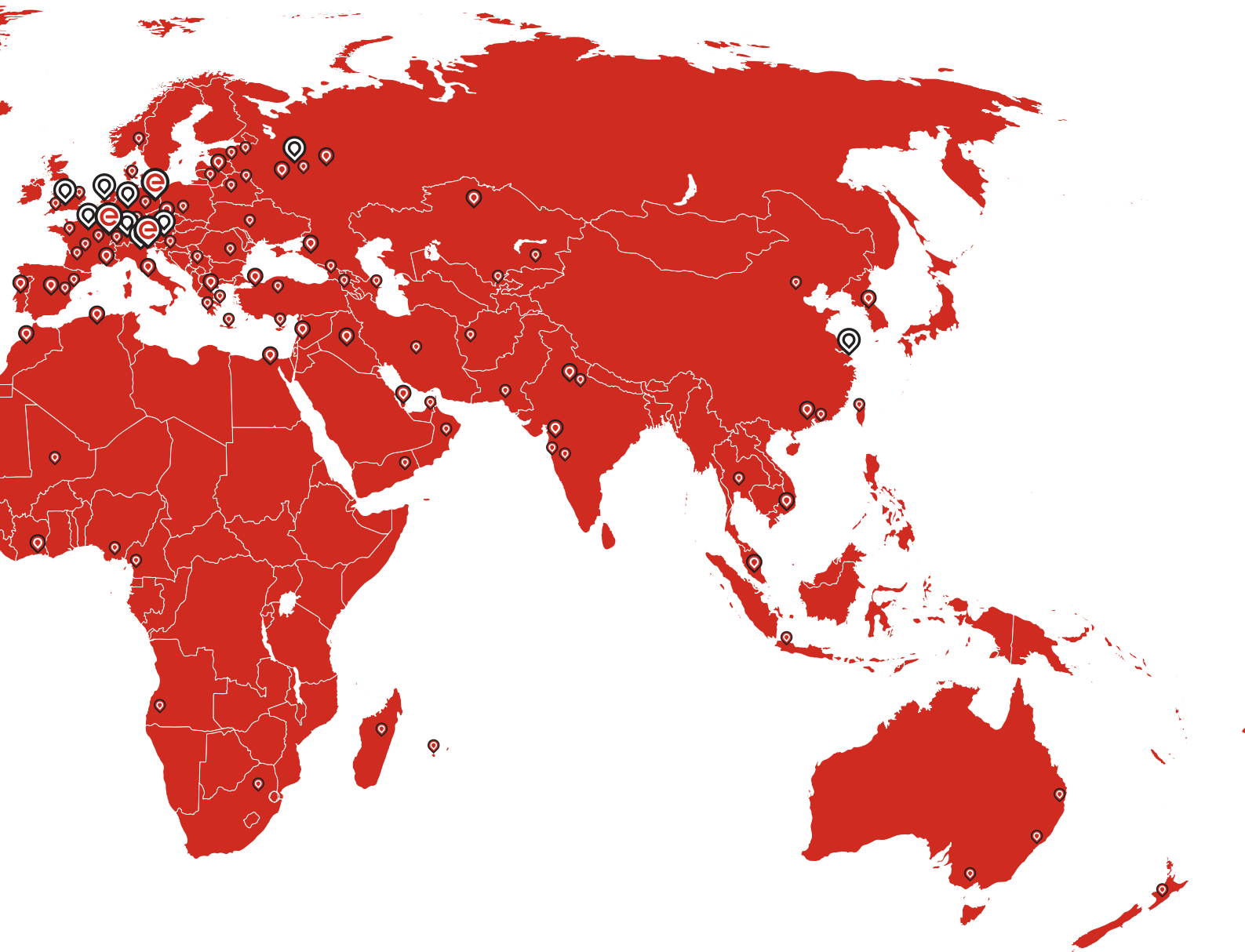
---

Capitalising on more than 90 years of working experience ELCO has developed a wide commercial and technical network of skilled and experienced experts available in more than 70 countries.

Taking advantage of this international network of loyal partnerships today ELCO is able to provide professional support to the customer in order to define together the best solution and to develop and manage the project through its entire life-cycle.



-  PRODUCTION PLANT
-  REPRESENTATIVE OFFICE
-  OFFICIAL DISTRIBUTOR



3

**Production  
plants**

8

**Commercial  
branches**

70

**Countries**

Reached by our commercial  
and technical network

A grayscale photograph of an industrial facility, likely a pharmaceutical or food processing plant. The scene is dominated by large, polished stainless steel pipes and machinery. In the foreground, a large horizontal pipe runs across the frame, curving downwards. Below it, several vertical cylindrical tanks or vessels are visible, equipped with valves and gauges. The background shows a complex network of pipes and structural steel beams, with overhead lighting fixtures illuminating the space. The overall atmosphere is clean, professional, and industrial.

## Applications

---

Flexibility  
Quality  
Product reliability



## Heating

Residential burners with power output ranging from 10 kW to 300 kW operating with oil, gas, heavy oil or dual fuel configuration.



## Commercial

Burners range from 100 kW to 10 MW, designed not only to produce heat but also for process applications, such as ovens, dryers, incinerators, painting booths, and hot air generators.



## Industry

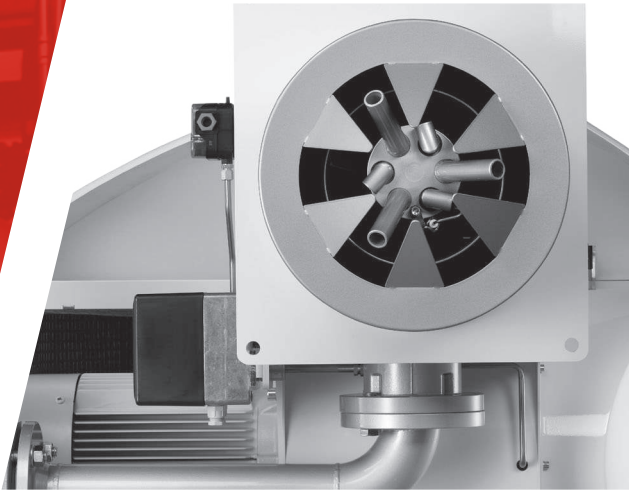
Burners with high technical profile and output power range up to 80 MW, used for industrial processes as well as in special applications. The complexity of the projects in which they are involved requires highly qualified pre and after-sales support.

A red-tinted photograph of an industrial facility. In the foreground, a worker in a dark shirt and jeans is working on a large piece of machinery. The background shows complex piping, ductwork, and structural elements of the plant. The overall scene is industrial and technical.

Combustion **Experts**

Engineering  
solutions to ignite  
your future business





## Innovation

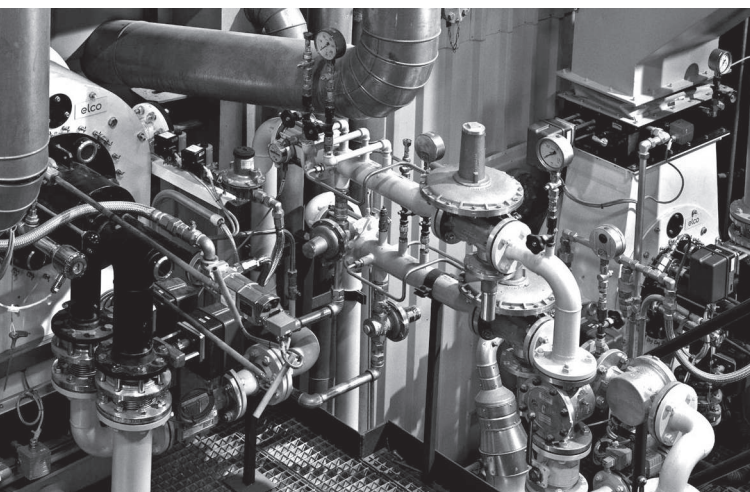
By linking a strong innovative ability to a developing will, ELCO conceives performing and reliable burners that respect the environment as well as corresponding services, in order to establish a lasting relationship with its customers.



## Competence

Being a specialist in the design of manufacturing burners, today ELCO is a leader in the development of combustion technology.

ELCO R&D engineering team is able to find technological solutions and resolve even the most complex requirements of its customers.



## Solutions

A long experience in developing customized burners for any requirement of the global market allows ELCO to guarantee reliability and excellent performance in any application area, even the most critical. No matter how difficult the burner installation may be, ELCO is able to design a solution that meets the highest technical requirements.

A grayscale photograph of an industrial facility, likely a power plant or refinery, featuring a complex network of metal walkways, railings, and structural beams. In the foreground, a large, white, cylindrical industrial burner is mounted on a metal frame. The burner has various pipes, valves, and a control panel. The background shows a high-ceilinged building with a grid of skylights and large windows. The overall scene is clean and industrial.

**Burner** engineering

The **ELCO** burners work with any fuel or combination of fuels:

**natural gas, light oil, heavy oil.**

Special configurations for specific fuels are available on request

## CUBIC 11 kW - 2 MW



VECTRON



PROTRON

## MONOBLOCK 2 MW - 22 MW



NEXTRON



EK EVO

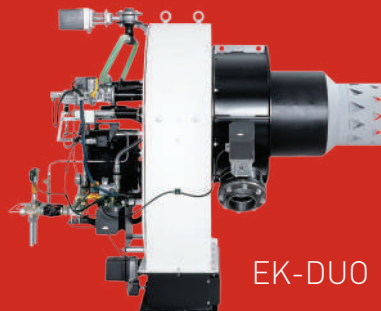


N10 / N11

## DUOBLOCK up to 80 MW



D-TRON



EK-DUO



RPD

**Service**

---

All **ELCO**  
products are  
backed up  
by a service  
network that  
sets standards  
in the industry





## Commissioning and maintenance

For safe and efficient operation of the burner system it is essential that the burner is commissioned by an expert: combustion will be optimally adjusted over the entire power range and all safety devices will be tested. The ELCO Service Team will keep the installation in good condition also through periodic maintenance activities, in order to ensure that the system always works efficiently and safely.



## International service network

ELCO offers a comprehensive range of services to suit any specific requirement. Its worldwide network of well-trained engineers and technicians defines the standards in the market, giving to the customer the guarantee to rely on high performance and reliable products.



## The Burner Academy



In order to respond to the needs of each customer ELCO created the Burner Academy, a real school where the know-how of the technicians is diffused to the partners. The Academy provides the opportunity for boiler room personnel, operators and engineers to attend a series of training sessions carried out on our test bench by highly qualified instructors.

## The **Group**

---



All over the world, Ariston Group is synonymous with comfort, energy efficiency and respect for the environment, thanks to its high efficiency products, its plants in compliance with the most advanced production standards and excellent pre- and after-sales customer support services.

The Group now has a leadership position in the global thermic comfort market for domestic, commercial and industrial spaces.

**1,66** **Billion € in sales**  
89% of sales is generated outside Italy

**7,5** **Million products per year**  
(and 34 million components) sold in over 150 countries in the world

**79%** **Of turnover from innovation**  
(products younger than 5 years)

**7.400** **Employees**  
across 42 countries of 53 different nationalities

**75** **Million € in investments and R&D**  
The Group features 25 centres of competence for R&D in 16 countries

# References

---



## Altchemnitz, Germany

6x N11.22000 G-EU1  
Total: 132 MW



## Białystok, Poland

2x RPD 70 G-EU2  
Total: 41 MW



## Beijing, China

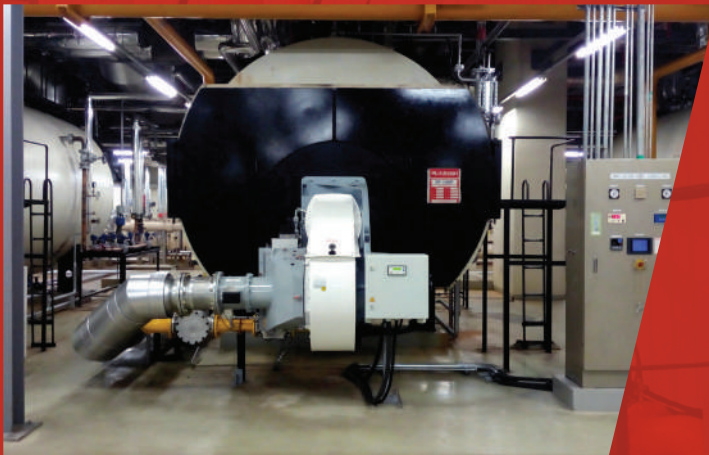
2x N10.16000 G-EU2 FGR  
Total: 32 MW





## Beijing, China

1x EK EVO 8.5800 G-EU3  
2x EK EVO 8.7100 G-EU3  
Total: 21 MW



## Seoul, South Korea

3x N10.16000.45 G-EU2 FGR  
1x N10.12000.37 GL-EUF  
Total: 80 MW



## Stavanger, Norway

2x EK-DUO 4.1600 G-E  
Total: 32 MW

# References

---



## Monza, Italy

1x N11.19000 G-EU2 FGR  
Total: 19 MW



## Sergiyev Posad, Russia

2x N6.2900 G-R  
2x N7.3600 G-R  
Total: 22 MW



## Beijing, China

4x RPD 100 G-EU  
Total: 180 MW

## Subsidiaries ELCO

### ITALY

Via Roma, 64  
31023 Resana (TV)  
Tel. +39 0423 719 500  
Fax +39 0423 719 580

### GERMANY

**ELCO GmbH**  
Dreieichstraße 10  
Mörfelden-Walldorf  
Tel.: +49 (0) 6105 287-287  
Fax: +49 (0) 6105 287-199

### FRANCE

14, rue du Saule Trapu  
Parc d'activité du Moulin - 91882 Massy  
Tel. +33 01 60 13 64 64  
Fax +33 01 60 13 64 65

### SWITZERLAND

**Elcotherm AG**  
Sarganserstrasse 100  
7324 Vilters  
Tel. +41 (0)81 725 25 25  
Fax +41 (0)81 723 13 59

### CHINA

**Ariston Thermo (China) Co., Ltd.**  
F/15, V-Capital Bldg  
No. 333 Xian Xia Road  
200336 Shanghai  
Tel. +86 21 6039 8691  
Fax +86 21 6039 8620

### UK & IRELAND

**Ariston Thermo UK Ltd**  
Suite 3, The Crown House  
Blackpole East, Blackpole Road,  
Worcester WR3 8SG  
Tel. +44 01905 788010  
Fax +44 01905 788011

### NETHERLANDS

**Elco Burners B.V.**  
Meerpaalweg, 1 - 1332 BB Almere  
P.O. box 30048 - 1303 AA Almere  
Tel. +31 088 69 573 11  
Fax +31 088 69 573 90

### AUSTRIA

**ELCO Austria GmbH**  
Aredstraße 16 - 18  
2544 Leobersdorf  
Tel. +43 (0)2256 639 99 32  
Fax +43 (0)2256 644 11

### RUSSIA

**Ariston Thermo RUS**  
Eniseyskaya str. 1, bld 1,  
Office Center "LIRA" #438  
129344 Moscow  
Tel. +7 495 213 0300 #5700  
Fax +7 495 213 0302



# elco

---

Contact us to know more  
about our products and solutions

**[www.elco-burners.com](http://www.elco-burners.com)**  
**[contact@elco-burners.com](mailto:contact@elco-burners.com)**