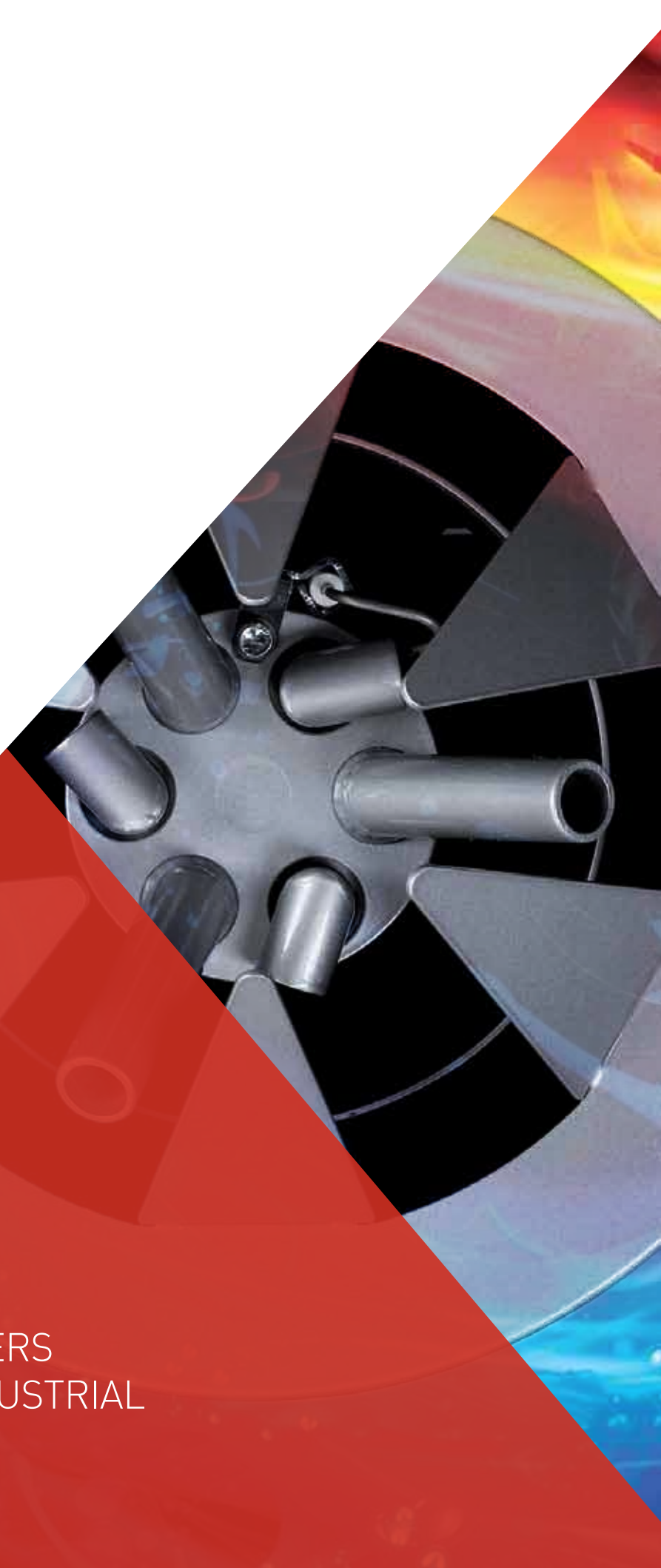




COMPANY PROFILE

CUTTING-EDGE BURNERS
FOR HEATING AND INDUSTRIAL
APPLICATIONS



ELCO always looks for
the best technologies
and develops new
ones to improve
the efficiency of its
solutions.

”

Heritage

90TH

Heating your life.
Since 1928.

- 1928** The company E. Looser & Co. has been founded in Vilters (Switzerland) by Emil and Elsa Looser.
- 1930** Production of the first semiautomatic fuel oil blown air burner for furnaces.
- 1938** First exports to Belgium and Sweden
- 1962** Production of the first blown air gas burners in the plant of Ravensburg (Germany)
- 1979** Production of burner N° 1.000.000
- 1988** Opening of the new production site in Vilters with a capacity of 15.000 m³, including a logistics center
- 1994** Merger with the German company Klöckner and French Cuenod Thermotechnique. The new group employs 3.100 persons. Doubling of sales
- 2001** The Italian MTS Group (today Ariston Thermo) acquires the company
- 2009** Beginning of a project of renovation of the product range with the progressive introduction of a new platform for VECTRON burners and two brand new burner ranges: NEXTRON, EK EVO
- 2017** The ELCO range is extended thanks to the introduction of the new RPD models up to 80 MW
- 2018** 90th anniversary of ELCO



About us

Capitalising 90 years of working experience ELCO has developed a wide commercial and technical network of skilled and experienced experts available in more than 70 countries.

Taking advantage of this international network of loyal partnerships today ELCO is able to provide professional support to the customer in order to define together the best solution and to develop and manage the project through its entire life-cycle.



PRODUCTION
PLANT



REPRESENTATIVE
OFFICE



OFFICIAL
DISTRIBUTOR

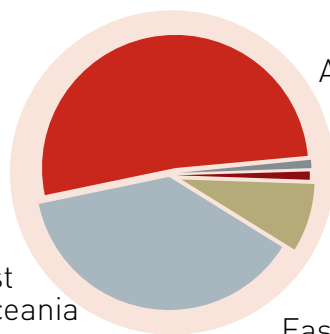


SALES

for geographic area

51,8%
Western Europe

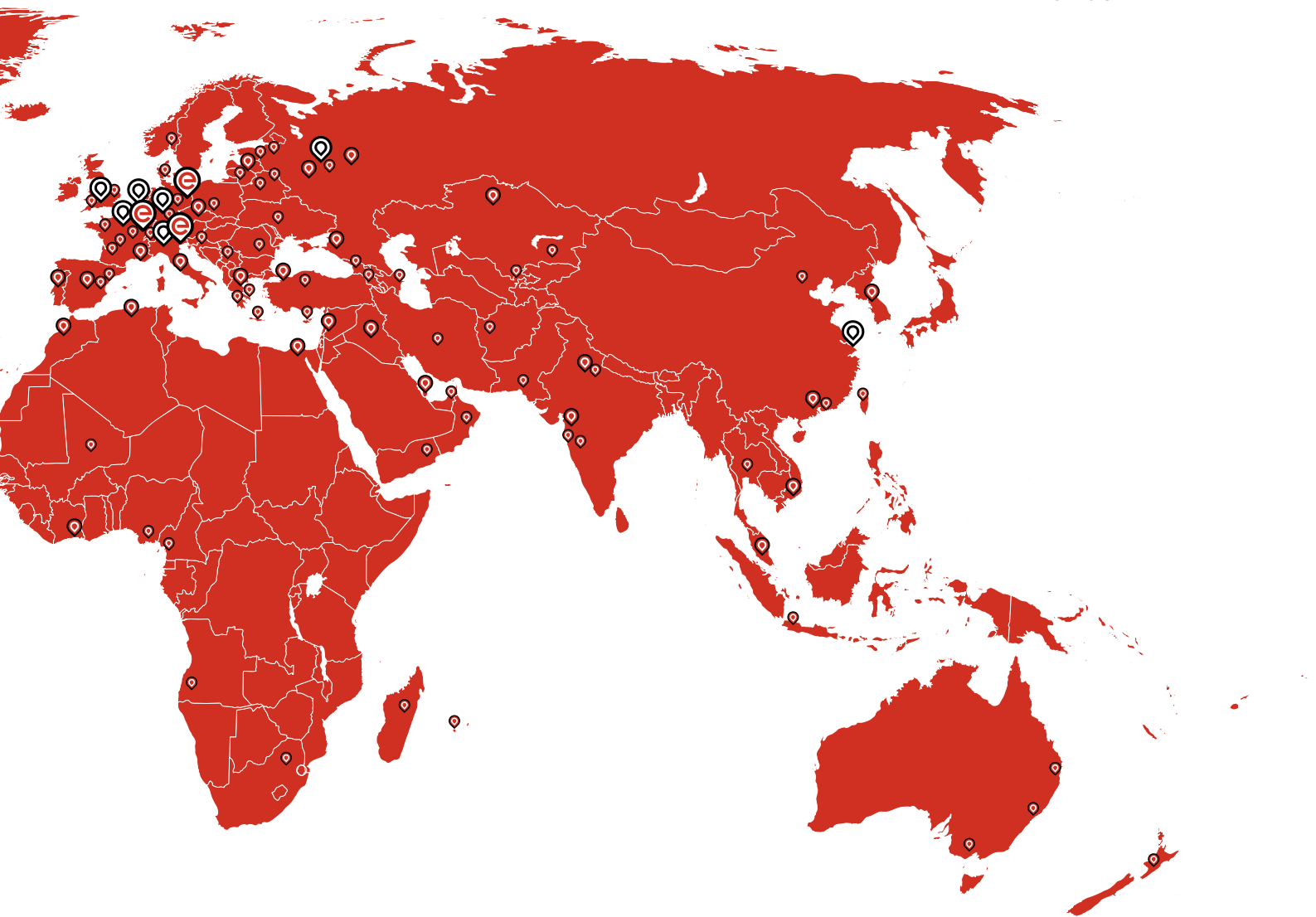
37,9%
Middle East
+ Asia + Oceania



1,0%
America

1,0%
Africa

8,3%
Eastern Europe
+ ex CSI



100.000

Products per year

Applications

The background of the slide is a grayscale photograph of an industrial facility. It features large, horizontal pipes with expansion joints, supported by a complex metal framework. In the lower part of the image, there are various pieces of industrial machinery, including what appears to be a large vertical tank or silo and some smaller equipment on the floor. The overall scene conveys a sense of a large-scale manufacturing or processing environment.

Flexibility
Quality
Product reliability



HEATING

Residential burners with power output ranging from 10 kW to 300 kW operating with oil, gas, heavy oil or dual fuel configuration.



COMMERCIAL

Burners range from 100 kW to 10 MW, designed not only to produce heat but also for process applications, such as ovens, dryers, incinerators, painting booths, and hot air generators.



INDUSTRY

Burners with high technical profile and output power range up to 80 MW, used for industrial processes as well as in special applications. The complexity of the projects in which they are involved requires highly qualified pre and after-sales support.



Innovative soul

By linking a strong innovative ability to a developing will, ELCO conceives performing and reliable burners that respect the environment as well as corresponding services, in order to establish a lasting relationship with its customers.



Competence

Being a specialist in the design of manufacturing burners, today ELCO is a leader in the development of combustion technology. ELCO R&D engineering team is able to find technological solutions and resolve even the most complex requirements of its customers.



Solutions for every need

A long experience in developing customized burners for any requirement of the global market allows Elco to guarantee reliability and excellent performance in any application area, even the most critical. No matter how difficult the burner installation may be, Elco is able to design a solution that meets the highest technical requirements.

Combustion
Experts



Engineering
solutions to
ignite your future
business

Burner engineering

The **ELCO** range
is available to work
with any fuel or
combination of fuels:
**natural gas, light oil,
heavy oil.**

Special configurations
for specific fuels are
available on request.



VECTRON



CUBIC
11 kW / 2 MW

NEXTRON

EK EVO

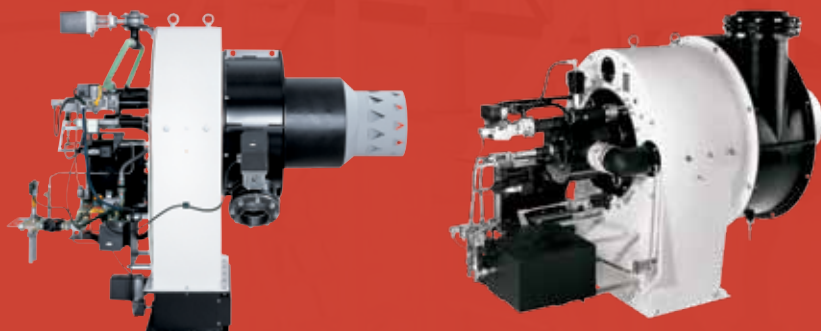
N10 / N11



MONOBLOCK
2 MW / 22 MW

EK-DUO

RPD



DUOBLOCK
< 80 MW



Service

All **ELCO**
products are
backed up
by a service
network that
sets standards
in the industry.

Commissioning

For safe and efficient operation of your burner system it is very important that the burner is commissioned by an expert. The combustion will be optimally adjusted over the whole power range of the burner, and all the safeties will be tested.

Maintenance and inspection

The burner is a crucial part of the installation. To keep your installation in good conditions, it is important to maintain the burner periodically, and inspect all the safeties to ensure that your system operates safely. Fortunately, you can rely on the professional services of ELCO which can perfectly perform this service for you.

International service network

ELCO offers a comprehensive range of services to suit any specific requirement. Its worldwide network of well-trained local engineers and technicians defines the standards in the market, giving to each customer the guarantee to rely on high performance and reliable products.



The Burner Academy

In order to respond to the needs of our customers we created the Burner Academy, a real school where the knowhow of our technicians is diffused to our partners. We provide the opportunity for boiler room personnel, operators and engineers to attend a series of training sessions carried out on our test bench by highly qualified instructors.



All over the world, Ariston Thermo is synonymous with comfort, energy efficiency and respect for the environment, thanks to its high efficiency products, its plants in compliance with the most advanced production standards and excellent pre- and after-sales customer support services.

The Group now has a leadership position in the global thermic comfort market for domestic, commercial and industrial spaces.



1,43

BILLION EURO IN SALES



7

MILLION PRODUCTS FOR YEARS



6.900

EMPLOYEES



69

MILLION EURO IN INVESTMENTS AND R&D

References



1x EK-DUO 2.550 GL-EUF
(6200 kW)

2x EK-DUO 2.700 GL-EUF
(2x 7800 kW)

Stuttgart, Germany



2x N6.2900 G-R
(2x 3000 kW)

2x N7.3600 G-R
(2x 8000 kW)

Sergiev Posad, Russia



4x RPD 100 G-EU
(4x 45000 kW)

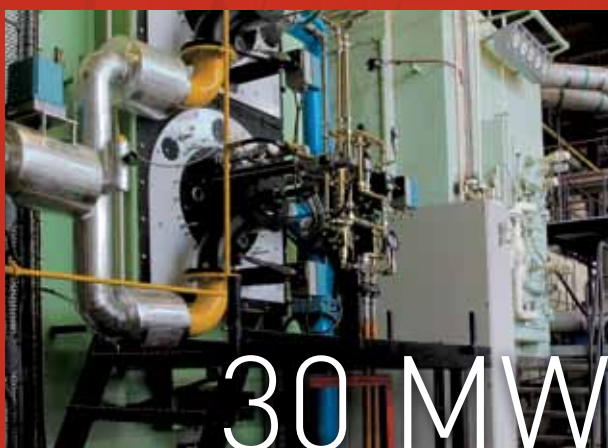
Beijing, China



1x EK EVO 8.5800 G-EU3
(6000 kW)

2x EK EVO 8.7100 G-EU3
(2x 7500 kW)

Beijing, China



2x RPD 60 GL-EU
(2x 15000)

Amsterdam, Netherlands



2x EK-DUO 4.1600 G-E
(2x 16000 kW)

Stavanger, Norway

References



1x EK EVO 8.5800 G-EU3 FGR
(6000 kW)

2x EK EVO 7.3600 G-EF3 FGR
(2x 4000 kW)

Beijing, China



2x N10.16000 G-EU FGR
(2x 16000 kW)

Trondheim, Norway



1x EK-DUO 4.1600 G-EU2
(1x 16000 kW)

Saint Petersburg, Russia

Subsidiaries ELCO

GERMANY

ELCO GmbH

Dreieichstraße 10
Mörfelden-Walldorf
Tel.: +49 (0) 6105 287-287
Fax: +49 (0) 6105 287-199

FRANCE

14, rue du Saule Trapu
Parc d'activité du Moulin - 91882 Massy
Tel. +33 01 60 13 64 64
Fax +33 01 60 13 64 65

NETHERLANDS

Elco Burners B.V.

Meerpaalweg, 1 - 1332 BB Almere
P.O. box 30048 - 1303 AA Almere
Tel. +31 088 69 573 11
Fax +31 088 69 573 90

ITALY

Viale Roma, 41
28100 Novara
Tel. +39 0732 633 590
Fax +39 0732 633 599

SWITZERLAND

Elcotherm AG

Sarganserstrasse 100
7324 Vilters
Tel. +41 (0)81 725 25 25
Fax +41 (0)81 723 13 59

RUSSIA

Ariston Thermo RUS

Eniseyskaya str. 1, bld 1,
Office Center "LIRA" #415
129344 Moscow
Tel. +7 495 213 0300 #5700
Fax +7 495 213 0302

AUSTRIA

ELCO Austria GmbH

Aredstraße 16 - 18
2544 Leobersdorf
Tel. +43 (0)2256 639 99 32
Fax +43 (0)2256 644 11

CHINA

Ariston Thermo (China) Co., Ltd.

17A2, V-Capital Bldg
No. 333 Xian Xia Road
200336 Shanghai
Tel. +86 21 6039 8691
Fax +86 21 6039 8620

ENGLAND

Ariston Thermo UK Ltd

Suite 3, The Crown House
Blackpole East, Blackpole Road,
Worcester WR3 8SG
Tel. +44 01905 788010
Fax +44 01905 788011

The Elco logo is rendered in a bold, red, lowercase sans-serif font. The background of the page features a large, light gray triangle on the left side and a large, red triangle on the right side, meeting at a diagonal line.

elco

www.elco-burners.com

Contact us to know more
about our products and solutions

contact@elco-burners.com