

# elco

## EK EVO

MONOBLOCK BURNERS

250 - 13000 kW



# MAIN CHARACTERISTICS OF THE RANGE

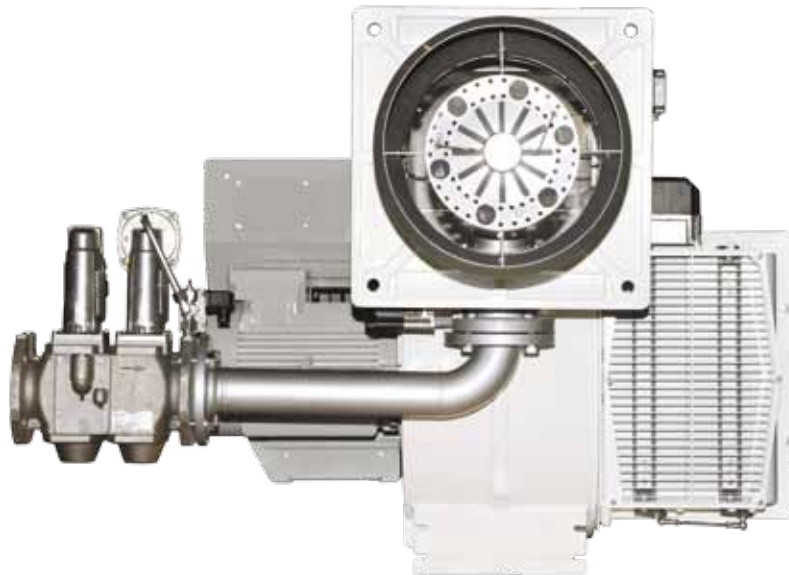
## Design

### Robust and professional

The design of the EKEVO® is the result of a successful synergy between ELCO key features and essential design.

The range EKEVO® introduces a brand new aluminium casting body and confirms the choice of ELCO about light colors and harmony of each shape.

Professionals will appreciate the flexibility of a 180° orientable air inlet, the compact switch box and the easy to clean glossy paint.



## Combustion

### Clean and steady

The standard all-purpose Low NOx Class 2 combustion head ensures a clean combustion with total application adaptability and great flame stability.

The Free Flame technology is a unique combustion process, capable to reach the NOx levels required by the most severe standards for all types of combustion chambers, whether they are 3-pass or reverse pass boilers.

## Flexibility

### A total advantage

The EKEVO® are characterized by their total flexibility of installation; they have been designed to be installed in different ways: up-firing, down-firing, upside-down or side-to-side (twin chamber boilers).

Options and configurations have been foreseen in order to fulfill any application need.



# Communication

## User-friendly and universal

Elcogram: a universal language based on symbols and numerical data. The burner setup and the reading of the available information about the EKEVO® operation are possible through a backlit display with a 5-buttons keyboard.

This user-friendly interface, already appreciated in former ELCO product ranges, assures quick commissioning operations and total functional parameters understanding, as ever before.



# Electronics

## Easy and comprehensive

All EKEVO® models are fully electronically controlled and they are equipped with the exclusive ELCO man-machine interface allowing simple and effective programming operations.

# Maintenance

## Simple and time saving

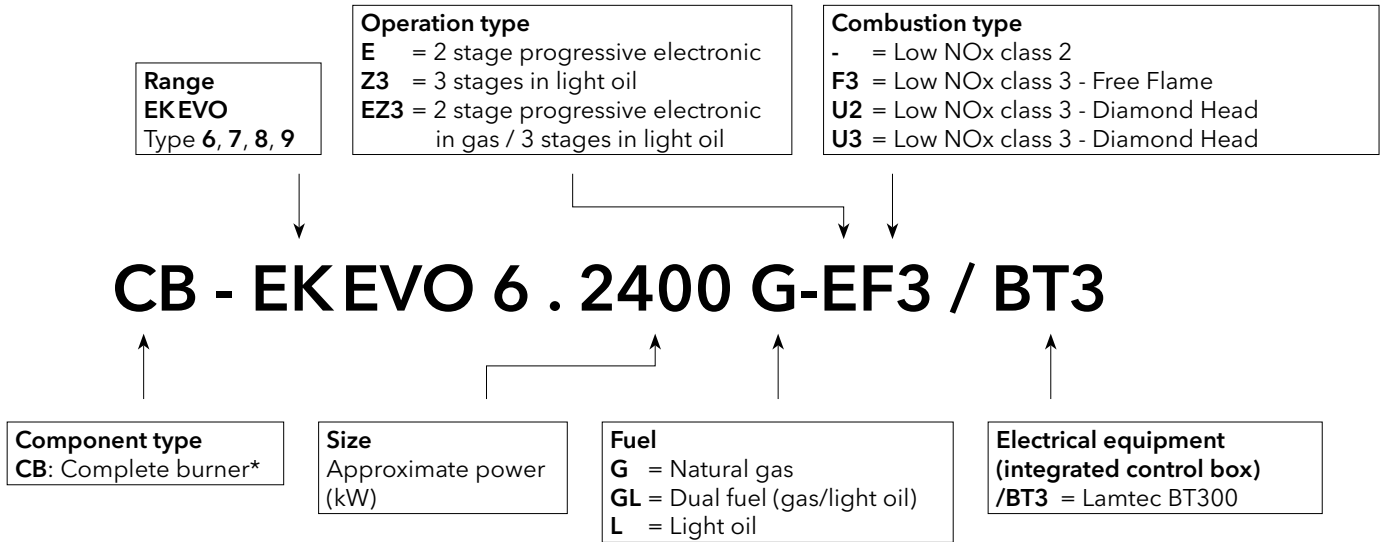
The maintenance of the EKEVO® burners can comfortably be carried out thanks to a wide opening above the housing, allowing easy access to the combustion components up to the fan, and thanks to the choice of the material: aluminium, lightweight to handle and resistant at the same time.

Maintenance operations are possible keeping the original combustion components' setup. Efficient and reliable combustion is granted on the EKEVO® range year after year.

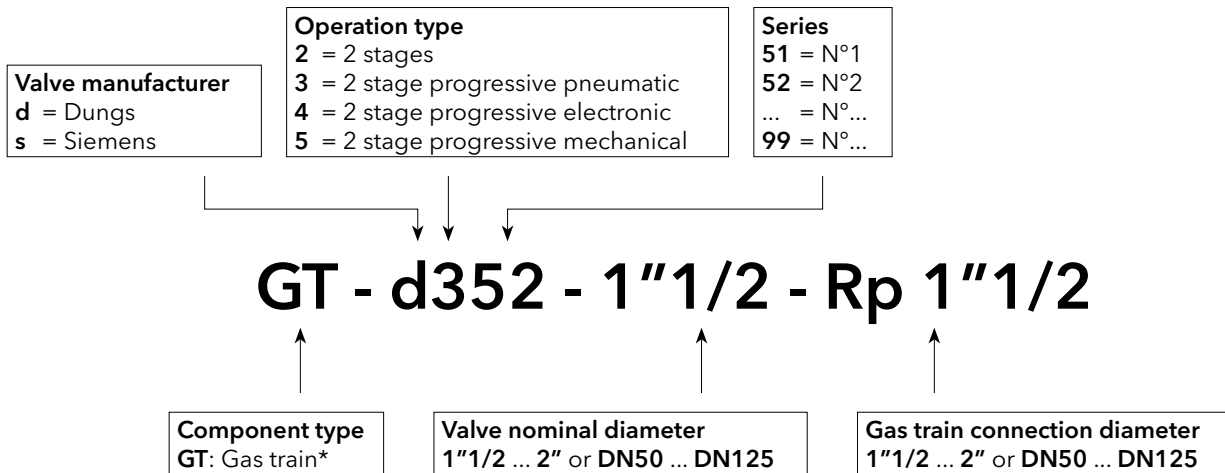


# DESIGNATION OF EK EVO COMPONENTS

## Body



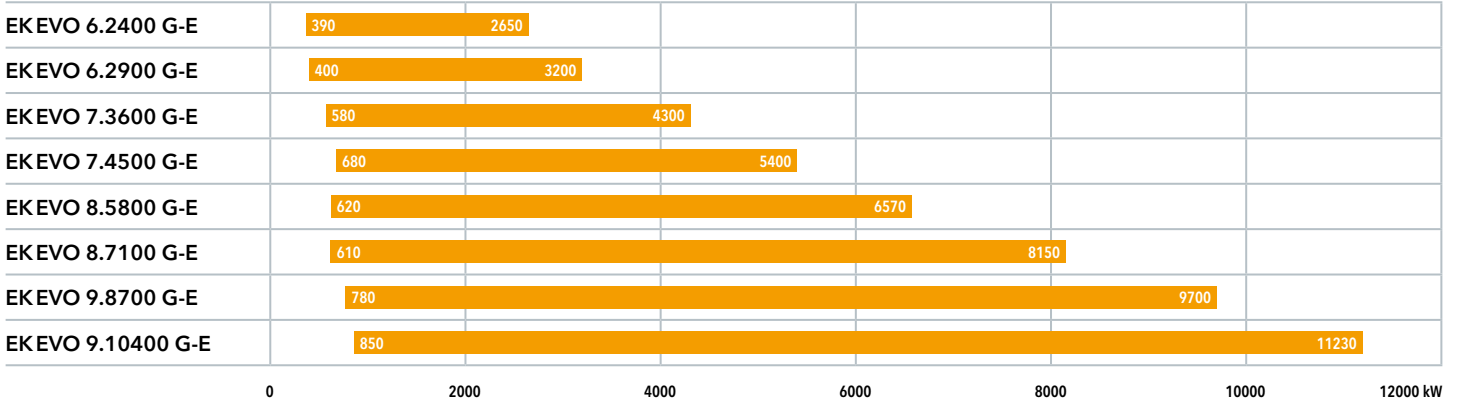
## Gas train



# RANGE OVERVIEW | GAS RANGE

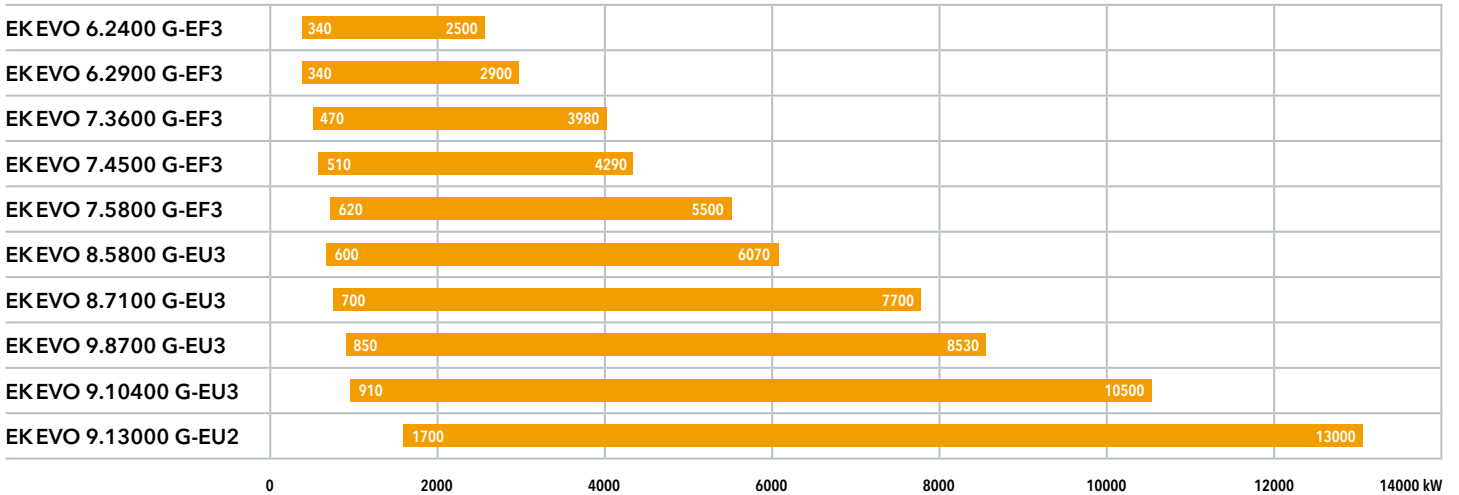
## EKEVO® 6 ... 9 G-E

Two stage progressive electronic - Low NOx Class 2 (< 120 mg/kWh)



## EKEVO® 6 ... 9 G-EF3/U2/U3

Two stage progressive electronic - Low NOx Class 3 (< 80 mg/kWh)

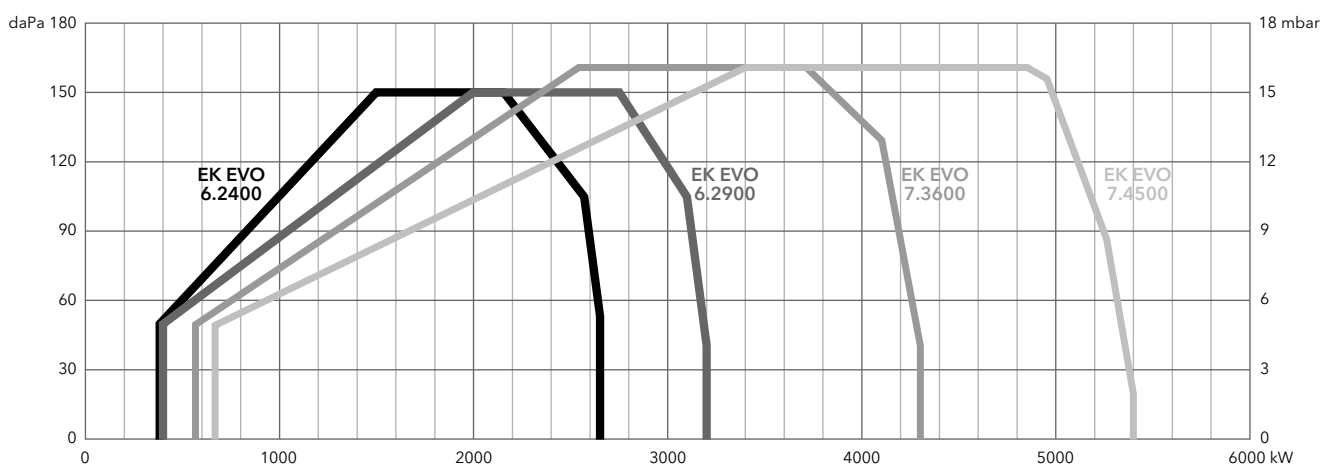


# TECHNICAL DATA | GAS RANGE

## EKEVO® 6 - 7 G-E

Two stage progressive electronic - Low NOx Class 2 (< 120 mg/kWh)

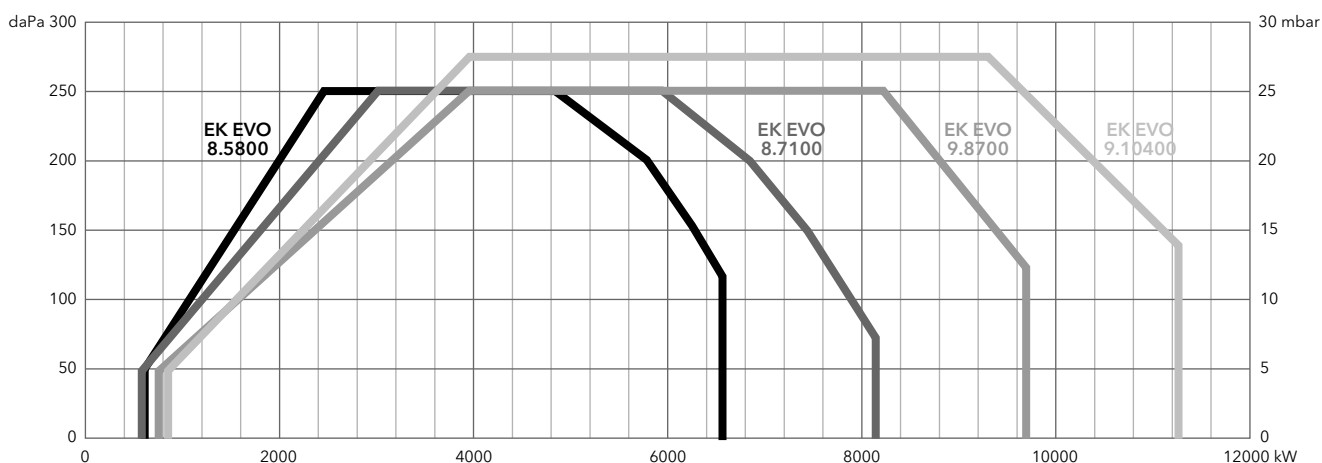
	EKEVO 6.2400 G-E	EKEVO 6.2900 G-E	EKEVO 7.3600 G-E	EKEVO 7.4500 G-E
Burner output [kW]	390 - 2650	400 - 3200	580 - 4300	680 - 5400
Gas pressure [mbar]	50 ... 500	55 ... 500	60 ... 500	65 ... 500
Fan motor	400 V - 50 Hz - 3 kW	400 V - 50 Hz - 4 kW	400 V - 50 Hz - 5,5 kW	400 V - 50 Hz - 7,5 kW
Auxiliary voltage	1NPE AC 230 V - 50 Hz	1NPE AC 230 V - 50 Hz	1NPE AC 230 V - 50 Hz	1NPE AC 230 V - 50 Hz
Power supply	3PE AC 400 V - 50 Hz	3PE AC 400 V - 50 Hz	3PE AC 400 V - 50 Hz	3PE AC 400 V - 50 Hz



## EKEVO® 8 - 9 G-E

Two stage progressive electronic - Low NOx Class 2 (< 120 mg/kWh)

	EKEVO 8.5800 G-E	EKEVO 8.7100 G-E	EKEVO 9.8700 G-E	EKEVO 9.10400 G-E
Burner output [kW]	620 - 6570	610 - 8150	780 - 9700	850 - 11230
Gas pressure [mbar]	60 ... 500	60 ... 500	70 ... 500	70 ... 500
Fan motor	400 V - 50 Hz - 11 kW	400 V - 50 Hz - 15 kW	400 V - 50 Hz - 18,5 kW	400 V - 50 Hz - 22 kW
Auxiliary voltage	1NPE AC 230 V - 50 Hz	1NPE AC 230 V - 50 Hz	1NPE AC 230 V - 50 Hz	1NPE AC 230 V - 50 Hz
Power supply	3PE AC 400 V - 50 Hz	3PE AC 400 V - 50 Hz	3PE AC 400 V - 50 Hz	3PE AC 400 V - 50 Hz

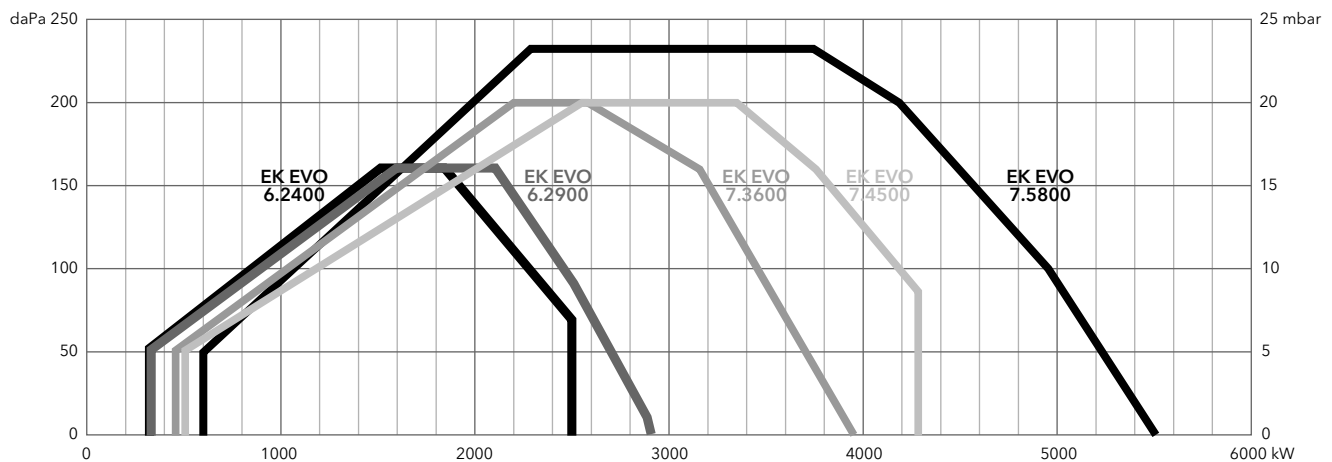


# TECHNICAL DATA | GAS RANGE

## EKEVO® 6 - 7 G-EF3

Two stage progressive electronic - Low NOx Class 3 (< 80 mg/kWh)

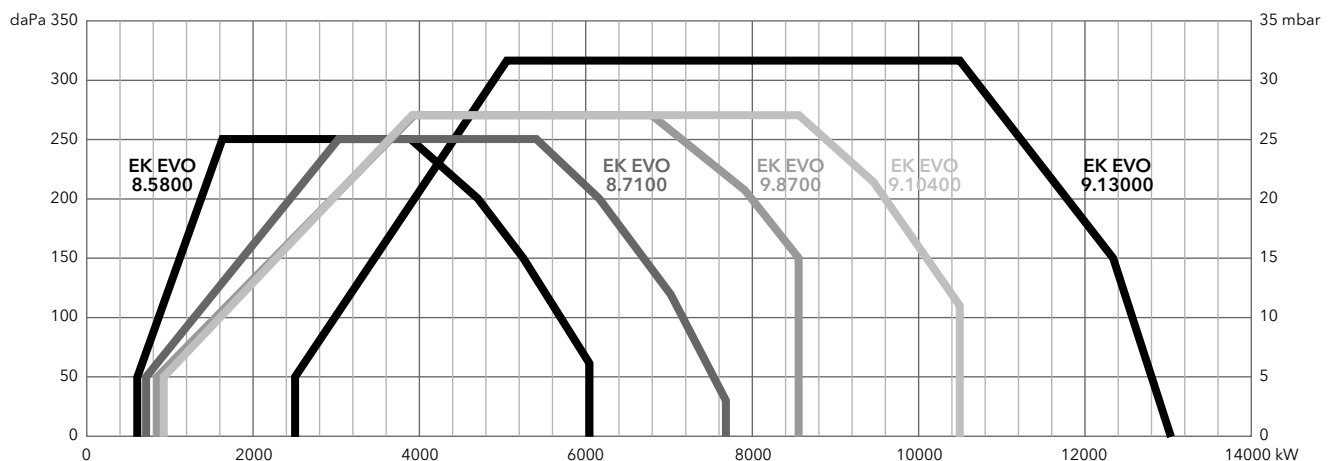
	EK EVO 6.2400 G-EF3	EK EVO 6.2900 G-EF3	EK EVO 7.3600 G-EF3	EK EVO 7.4500 G-EF3	EK EVO 7.5800 G-EF3
Burner output [kW]	340 - 2500	340 - 2900	470 - 3980	510 - 4290	620 - 5500
Gas pressure [mbar]	50 ... 500	50 ... 500	50 ... 500	50 ... 500	50 ... 500
Fan motor	400 V - 50 Hz - 3 kW	400 V - 50 Hz - 4 kW	400 V - 50 Hz - 7,5 kW	400 V - 50 Hz - 7,5 kW	400 V - 50 Hz - 11 kW
Auxiliary voltage	1NPE AC 230 V - 50 Hz	1NPE AC 230 V - 50 Hz	1NPE AC 230 V - 50 Hz	1NPE AC 230 V - 50 Hz	1NPE AC 230 V - 50 Hz
Power supply	3PE AC 400 V - 50 Hz	3PE AC 400 V - 50 Hz	3PE AC 400 V - 50 Hz	3PE AC 400 V - 50 Hz	3PE AC 400 V - 50 Hz



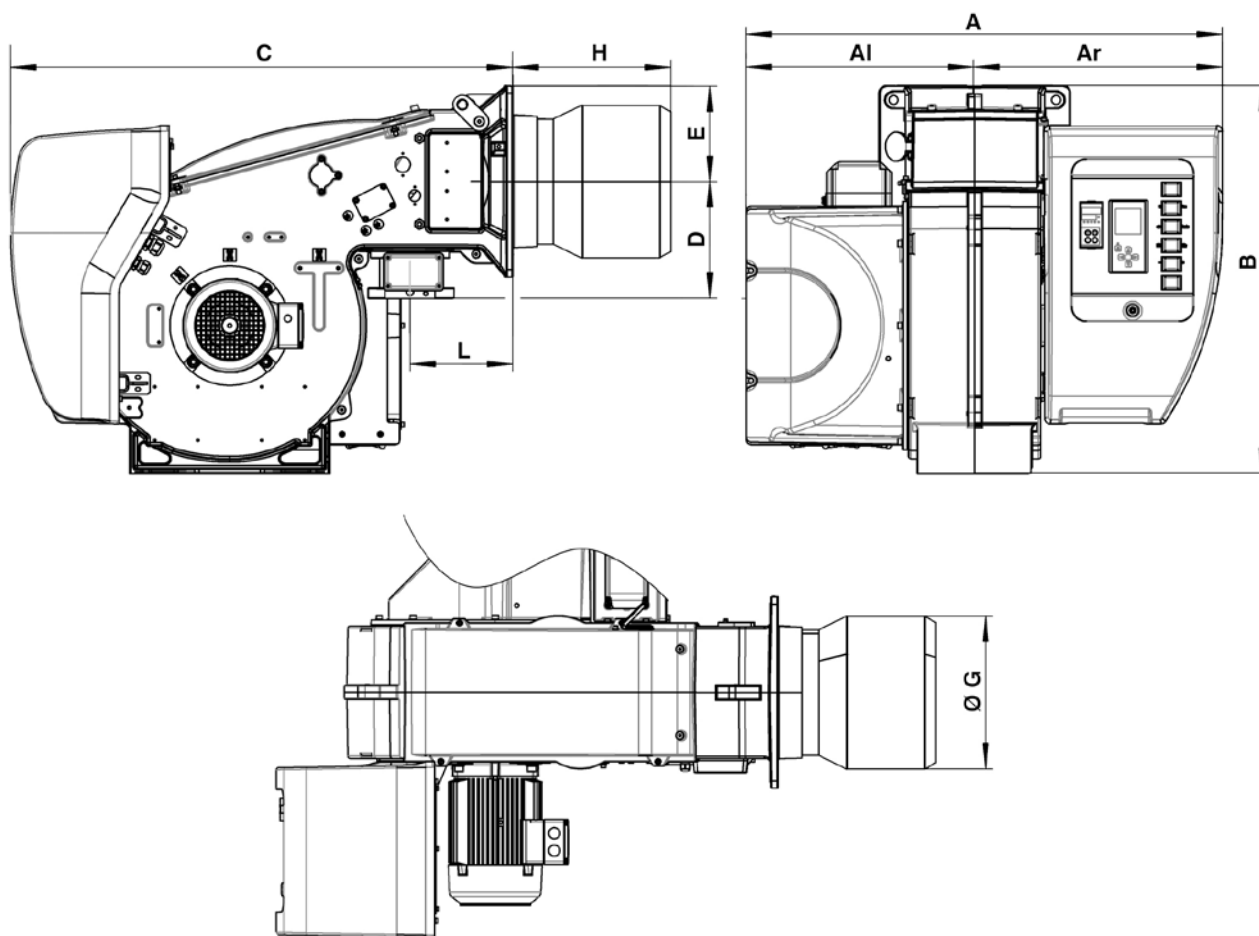
## EKEVO® 8 - 9 G-EU3/U2

Two stage progressive electronic - Low NOx Class 3 (< 80 mg/kWh)

	EK EVO 8.5800 G-EU3	EK EVO 8.7100 G-EU3	EK EVO 9.8700 G-EU3	EK EVO 9.10400 G-EU3	EK EVO 9.13000 G-EU2
Burner output [kW]	600 - 6070	700 - 7700	850 - 8530	910 - 10500	1700 - 13000
Gas pressure [mbar]	70 ... 500	70 ... 500	80 ... 500	80 ... 500	80 ... 500
Fan motor	400 V - 50 Hz - 11 kW	400 V - 50 Hz - 15 kW	400 V - 50 Hz - 18,5 kW	400 V - 50 Hz - 22 kW	400 V - 50 Hz - 37 kW
Auxiliary voltage	1NPE AC 230 V - 50 Hz	1NPE AC 230 V - 50 Hz	1NPE AC 230 V - 50 Hz	1NPE AC 230 V - 50 Hz	1NPE AC 230 V - 50 Hz
Power supply	3PE AC 400 V - 50 Hz	3PE AC 400 V - 50 Hz	3PE AC 400 V - 50 Hz	3PE AC 400 V - 50 Hz	3PE AC 400 V - 50 Hz

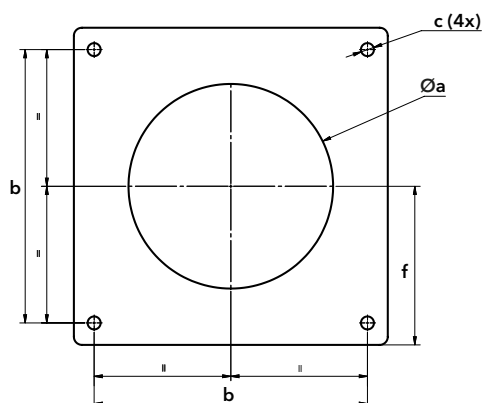


# OVERALL DIMENSIONS | GAS RANGE



	A	Al	Ar	B	C	D	E	ØG	H			L
									KN	KM	KL	
EKEVO 6... G-E	1035	479	556	812	1048	245	200	320	330	450	570	215
EKEVO 7... G-E	1093	506	587	941	1122	276	235	370	375	505	635	225
EKEVO 6... G-EF3	1035	479	556	812	1048	245	200	264	400	520	640	215
EKEVO 7... G-EF3	1093	506	587	941	1122	276	235	325	420	550	680	225
EK EVO 7.5800 G-EF3	1093	506	587	941	1168	276	235	325	420	550	680	225

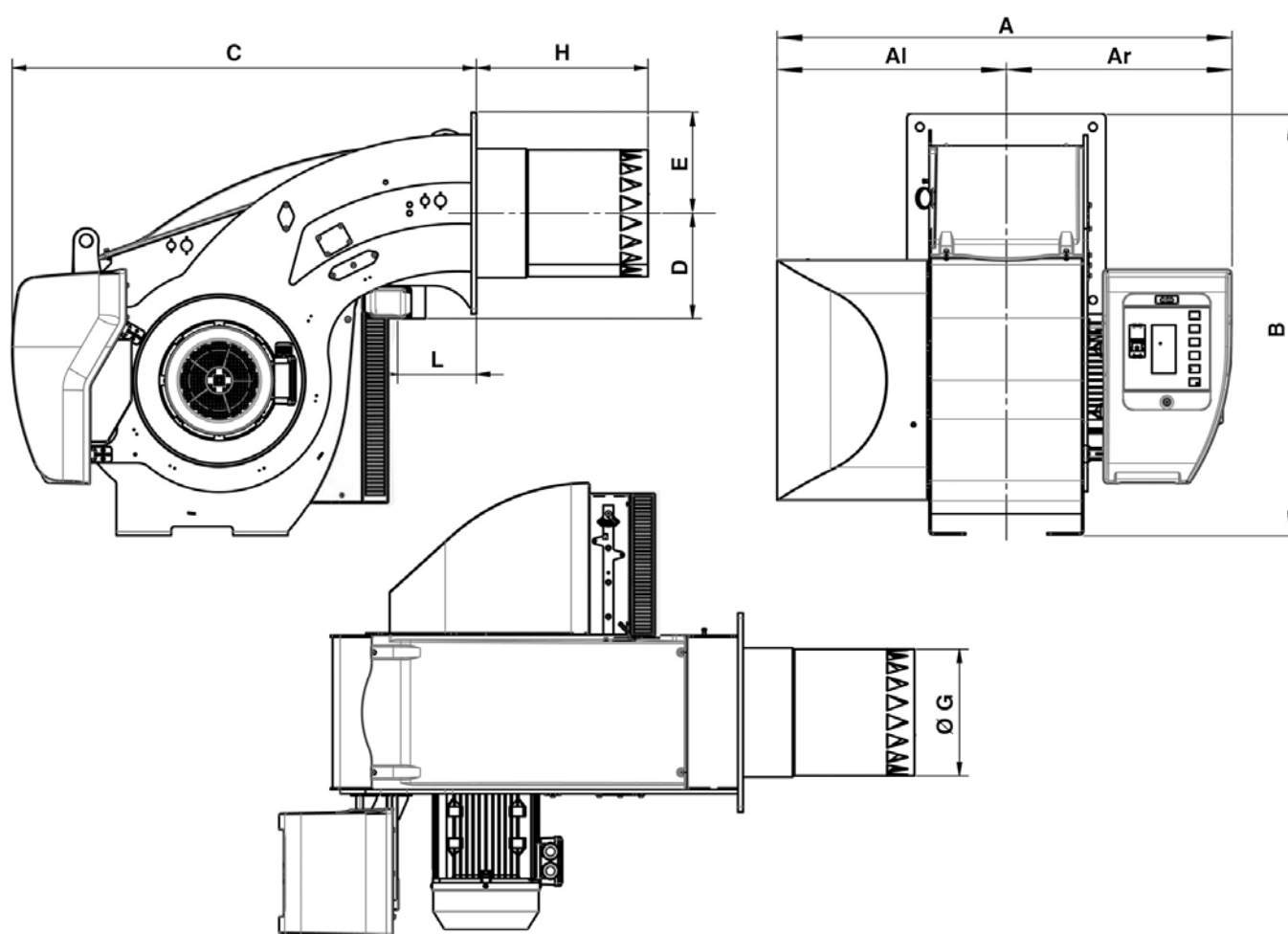
## Connecting flange



	Øa	b	c	f
EKEVO 6 G-E	330-340	340	M16	200
EKEVO 7 G-E	380-400	400	M16	235
EKEVO 6 G-EF3	300-340	340	M16	200
EKEVO 7 G-EF3	360-400	400	M16	235

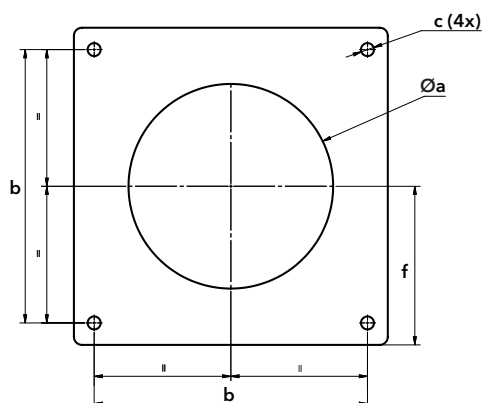


# OVERALL DIMENSIONS | GAS RANGE



	A	Al	Ar	B	C	D	E	ØG	H			L
									KN	KM	KL	
EKEVO 8... G-E	1336	670	666	1226	1354	307	288	376	500	640	780	230
EKEVO 9... G-E	1400	670	730	1291	1325	332	293	439	550	700	850	230
EKEVO 8... G-EU3	1336	670	666	1226	1354	307	288	376	500	640	780	230
EKEVO 9... G-EU3	1400	670	730	1291	1325	332	293	439	550	700	850	230
EK EVO 9.13000 G-EU2	1457	670	788	1291	1348	332	293	432	550	700	850	230

## Connecting flange

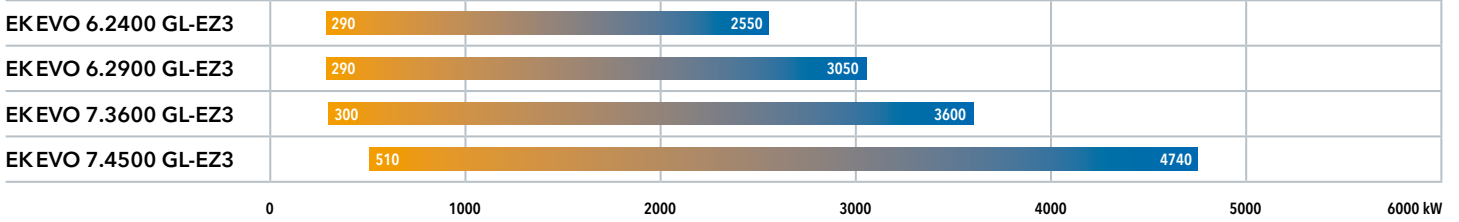


	Øa	b	c	f
EKEVO 8	390-410	505	M20	293
EKEVO 9	460-480	505	M20	293

# RANGE OVERVIEW | DUAL FUEL RANGE

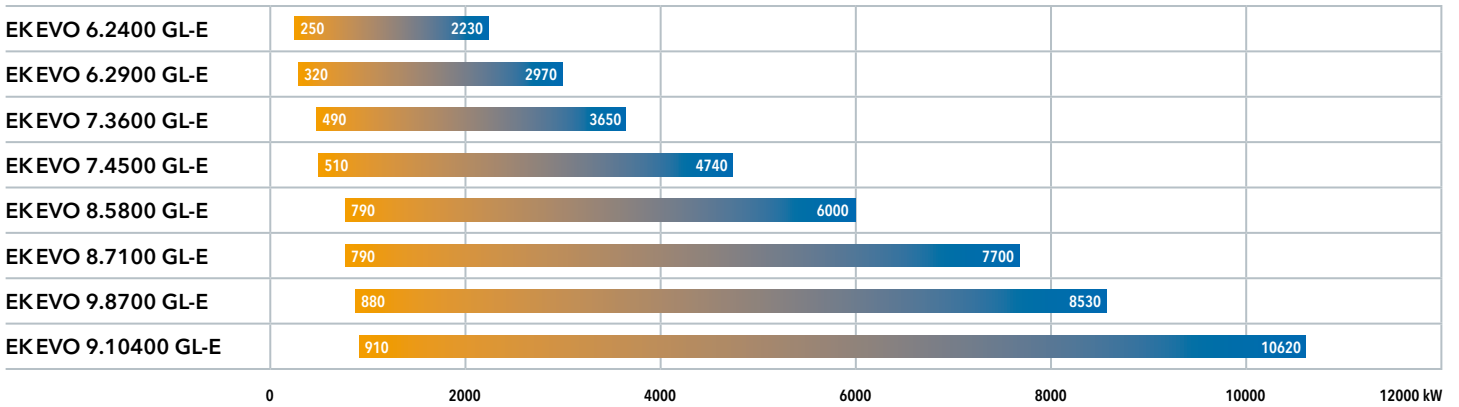
## EKEVO® 6 - 7 GL-EZ3

Two stage progressive electronic in gas / Three stages in light oil - Low NOx Class 2 in gas (< 120 mg/kWh) and in light oil (< 250 mg/kWh)



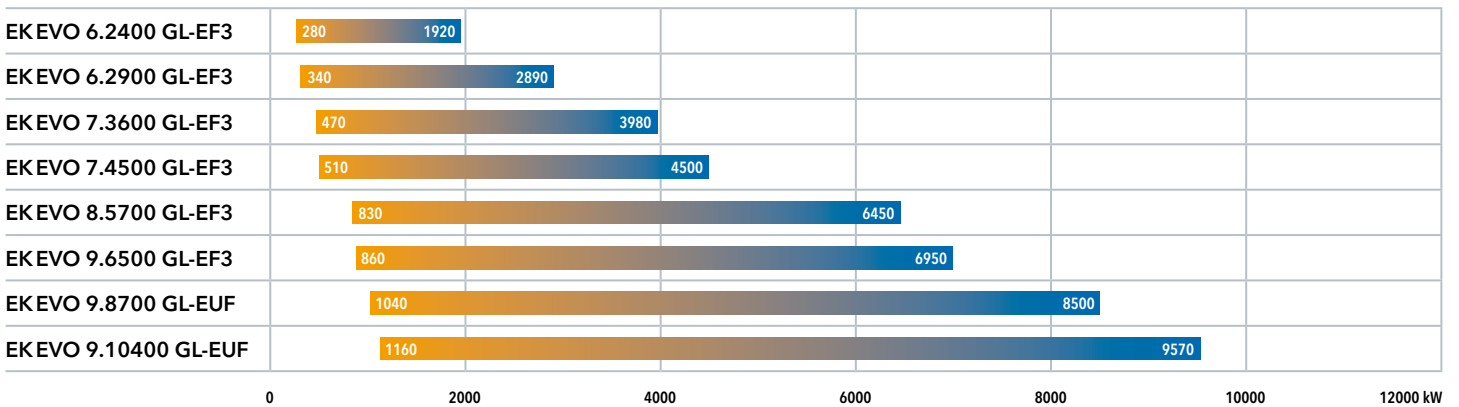
## EKEVO® 6 ... 9 GL-E

Two stage progressive electronic in gas and in light oil - Low NOx Class 2 in gas (< 120 mg/kWh) and in light oil (< 250 mg/kWh)



## EKEVO® 6 ... 9 GL-EF3/UF

Two stage progressive electronic in gas and in light oil - Low NOx Class 3 in gas (< 80 mg/kWh) and in light oil (< 120 mg/kWh)

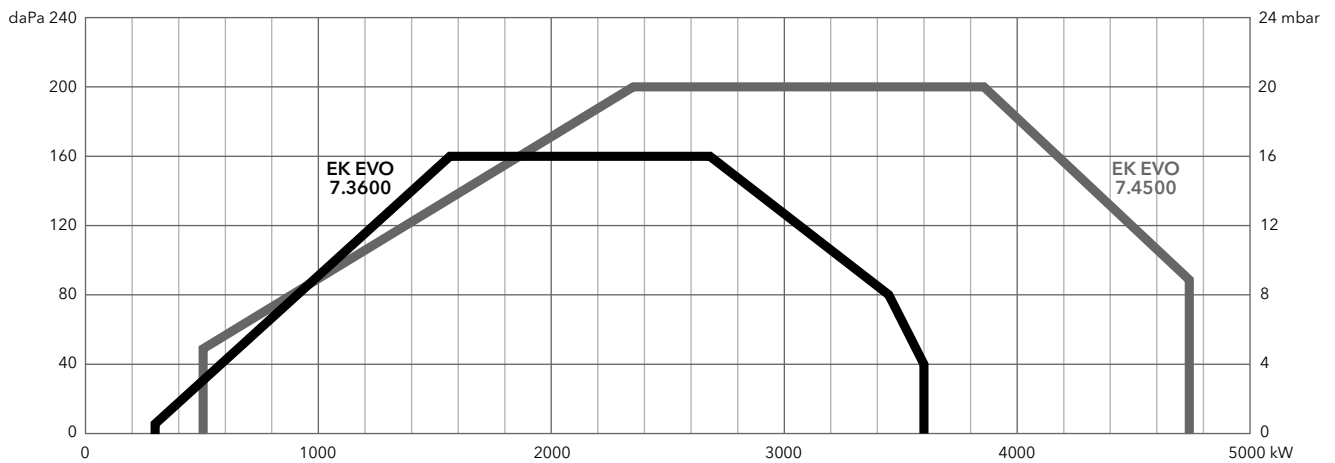
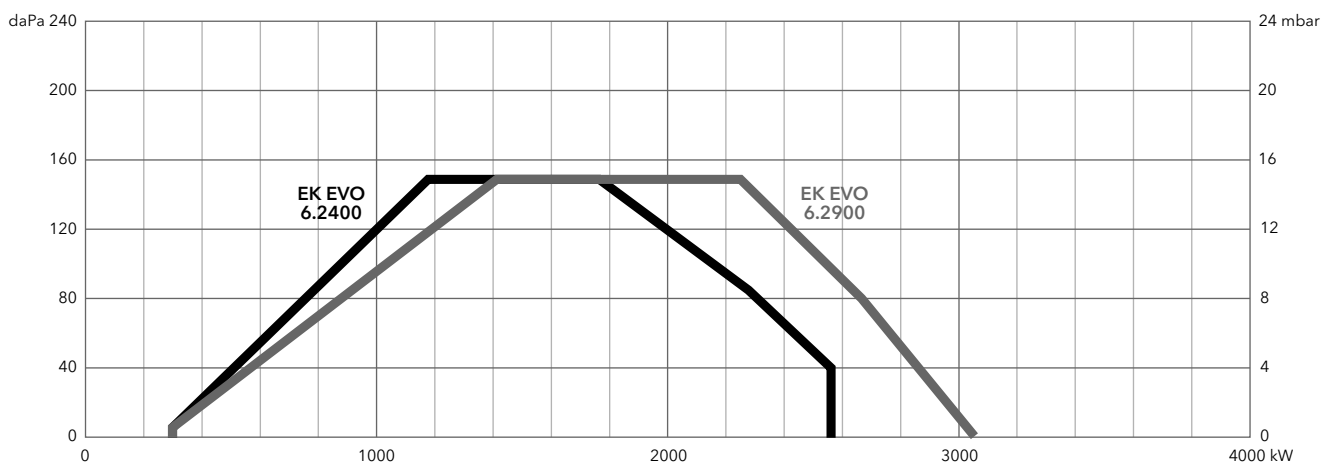


# TECHNICAL DATA | DUAL FUEL RANGE

## EKEVO® 6 - 7 GL-EZ3

Two stage progressive electronic in gas / Three stages in light oil - Low NOx Class 2 in gas (< 120 mg/kWh) and in light oil (< 250 mg/kWh)

	EKEVO 6.2400 GL-EZ3	EKEVO 6.2900 GL-EZ3	EKEVO 7.3600 GL-EZ3	EKEVO 7.4500 GL-EZ3
Burner output in gas [kW]	290 - 2550	290 - 3050	300 - 3600	510 - 4740
Burner output in light oil [kW]	730 - 2470	730 - 2790	1090 - 3600	1300 - 4740
Gas pressure [mbar]	50 ... 500	50 ... 500	50 ... 500	50 ... 500
Fan motor	400 V - 50 Hz - 3 kW	400 V - 50 Hz - 4 kW	400 V - 50 Hz - 5,5 kW	400 V - 50 Hz - 7,5 kW
Oil pump motor	400 V - 50 Hz - 0,55 kW	400 V - 50 Hz - 0,55 kW	400 V - 50 Hz - 0,74 kW	400 V - 50 Hz - 0,74 kW
Auxiliary voltage	1NPE AC 230 V - 50 Hz	1NPE AC 230 V - 50 Hz	1NPE AC 230 V - 50 Hz	1NPE AC 230 V - 50 Hz
Power supply	3PE AC 400 V - 50 Hz	3PE AC 400 V - 50 Hz	3PE AC 400 V - 50 Hz	3PE AC 400 V - 50 Hz

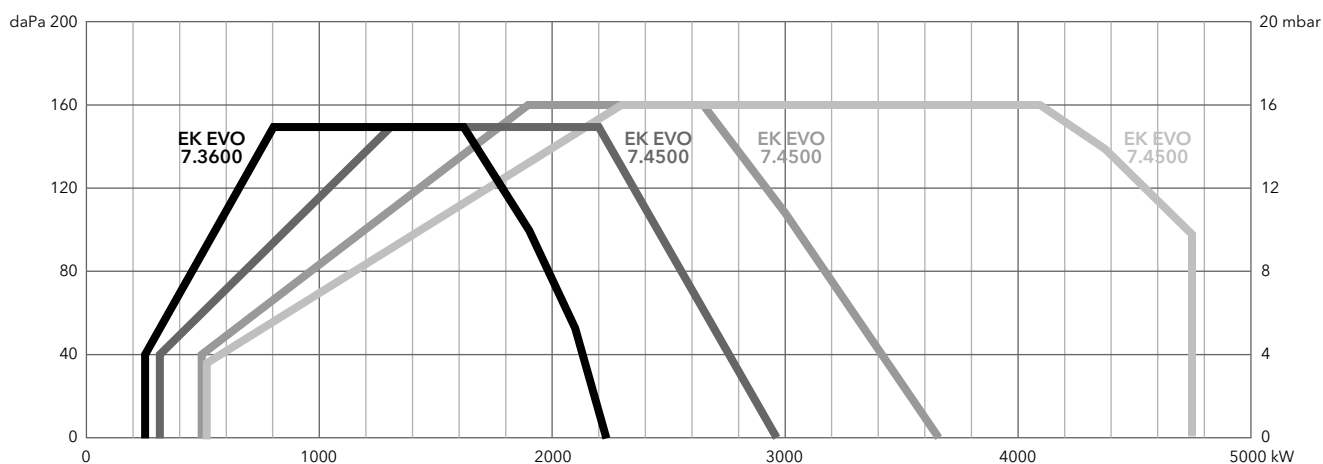


# TECHNICAL DATA | DUAL FUEL RANGE

## EKEVO® 6 - 7 GL-E

Two stage progressive electronic in gas and in light oil - Low NOx Class 2 in gas (< 120 mg/kWh) and in light oil (< 250 mg/kWh)

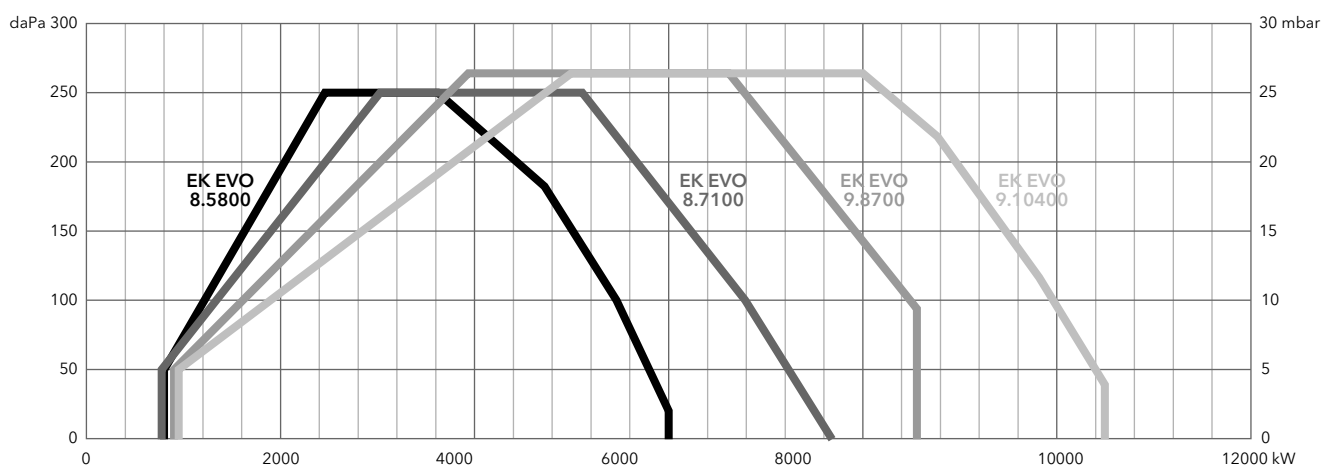
	EKEVO 6.2400 GL-E	EKEVO 6.2900 GL-E	EKEVO 7.3600 GL-E	EKEVO 7.4500 GL-E
Burner output in gas [kW]	250 - 2230	320 - 2970	490 - 3650	510 - 4740
Burner output in light oil [kW]	510 - 2030	650 - 2970	900 - 3650	1300 - 4740
Gas pressure [mbar]	50 ... 500	50 ... 500	50 ... 500	50 ... 500
Fan motor	400 V - 50 Hz - 3 kW	400 V - 50 Hz - 4 kW	400 V - 50 Hz - 5,5 kW	400 V - 50 Hz - 7,5 kW
Oil pump motor	400 V - 50 Hz - 0,74 kW	400 V - 50 Hz - 0,74 kW	400 V - 50 Hz - 1,1 kW	400 V - 50 Hz - 1,1 kW
Auxiliary voltage	1NPE AC 230 V - 50 Hz	1NPE AC 230 V - 50 Hz	1NPE AC 230 V - 50 Hz	1NPE AC 230 V - 50 Hz
Power supply	3PE AC 400 V - 50 Hz	3PE AC 400 V - 50 Hz	3PE AC 400 V - 50 Hz	3PE AC 400 V - 50 Hz



## EKEVO® 8 - 9 GL-E

Two stage progressive electronic in gas and in light oil - Low NOx Class 2 in gas (< 120 mg/kWh) and in light oil (< 250 mg/kWh)

	EKEVO 8.5800 GL-E	EKEVO 8.7100 GL-E	EKEVO 9.8700 GL-E	EKEVO 9.10400 GL-E
Burner output in gas [kW]	800 - 6000	790 - 7700	880 - 8530	910 - 10620
Burner output in light oil [kW]	1210 - 6000	1450 - 7700	2400 - 8530	2820 - 10620
Gas pressure [mbar]	100 ... 500	100 ... 500	100 ... 500	100 ... 500
Fan motor	400 V - 50 Hz - 11 kW	400 V - 50 Hz - 15 kW	400 V - 50 Hz - 18,5 kW	400 V - 50 Hz - 22 kW
Oil pump motor	400 V - 50 Hz - 3 kW	400 V - 50 Hz - 3 kW	400 V - 50 Hz - 3 kW	400 V - 50 Hz - 4 kW
Auxiliary voltage	1NPE AC 230 V - 50 Hz	1NPE AC 230 V - 50 Hz	1NPE AC 230 V - 50 Hz	1NPE AC 230 V - 50 Hz
Power supply	3PE AC 400 V - 50 Hz	3PE AC 400 V - 50 Hz	3PE AC 400 V - 50 Hz	3PE AC 400 V - 50 Hz

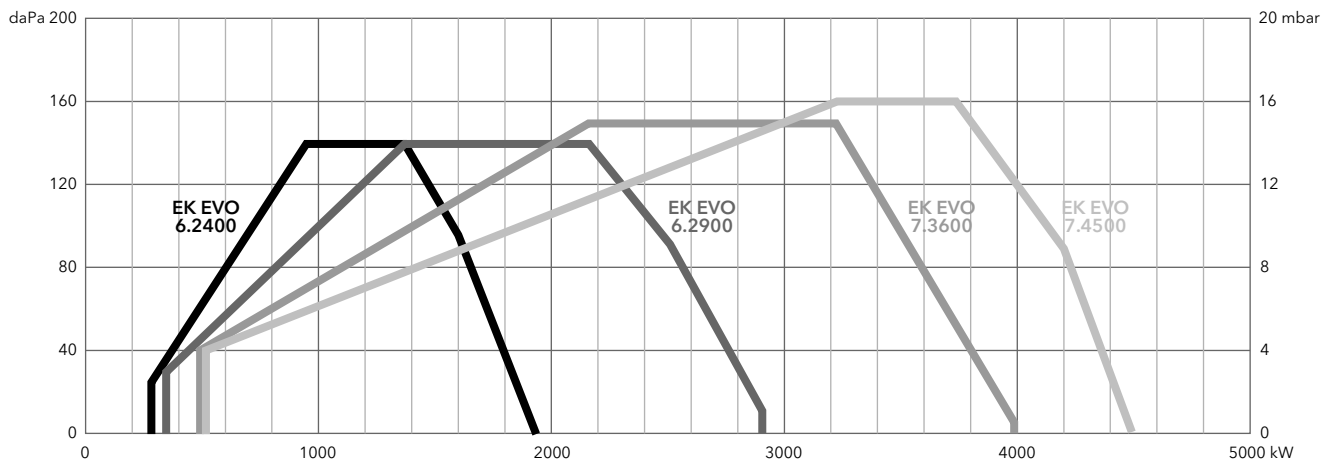


# TECHNICAL DATA | DUAL FUEL RANGE

## EKEVO® 6 - 7 GL-EF3

Two stage progressive electronic in gas and in light oil - Low NOx Class 3 in gas (< 80 mg/kWh) and in light oil (< 120 mg/kWh)

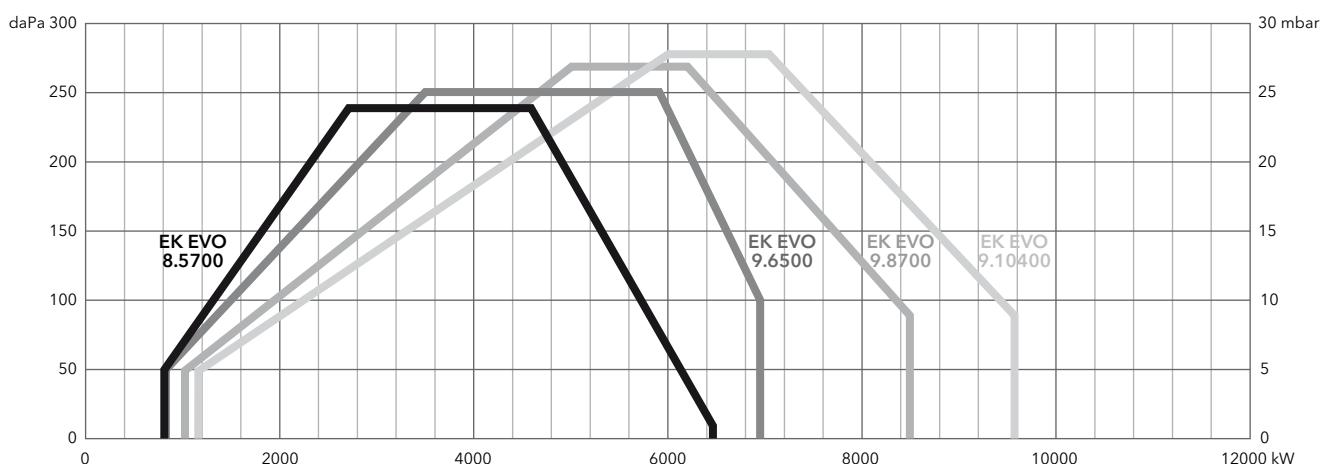
	EKEVO 6.2400 GL-EF3	EKEVO 6.2900 GL-EF3	EKEVO 7.3600 GL-EF3	EKEVO 7.4500 GL-EF3
Burner output in gas [kW]	280 - 1920	340 - 2890	470 - 3980	510 - 4500
Burner output in light oil [kW]	360 - 1920	480 - 2890	680 - 3980	740 - 4500
Gas pressure [mbar]	50 ... 500	50 ... 500	50 ... 500	50 ... 500
Fan motor	400 V - 50 Hz - 3 kW	400 V - 50 Hz - 4 kW	400 V - 50 Hz - 7,5 kW	400 V - 50 Hz - 7,5 kW
Oil pump motor	400 V - 50 Hz - 0,74 kW	400 V - 50 Hz - 0,74 kW	400 V - 50 Hz - 1,1 kW	400 V - 50 Hz - 1,5 kW
Auxiliary voltage	1NPE AC 230 V - 50 Hz	1NPE AC 230 V - 50 Hz	1NPE AC 230 V - 50 Hz	1NPE AC 230 V - 50 Hz
Power supply	3PE AC 400 V - 50 Hz	3PE AC 400 V - 50 Hz	3PE AC 400 V - 50 Hz	3PE AC 400 V - 50 Hz



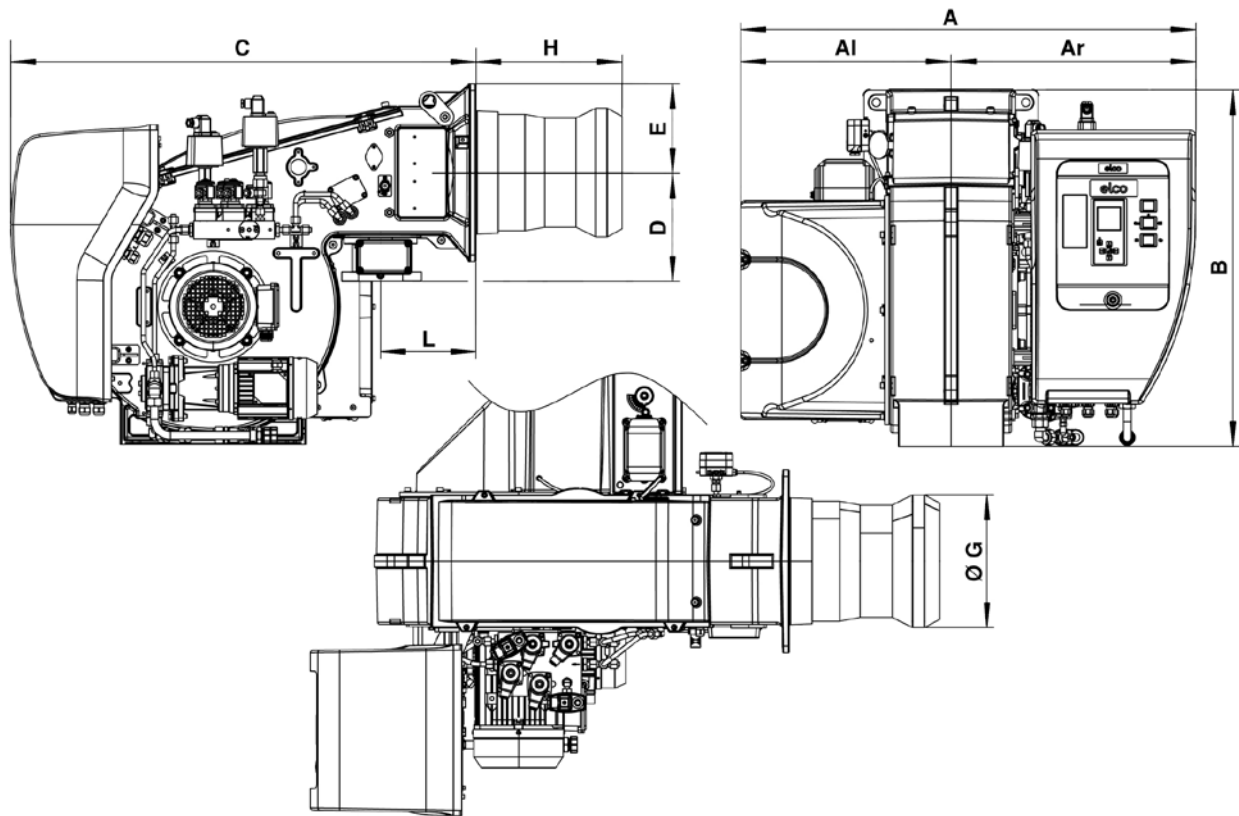
## EKEVO® 8 - 9 GL-EF3/EUF

Two stage progressive electronic in gas and in light oil - Low NOx Class 3 in gas (< 80 mg/kWh) and in light oil (< 120 mg/kWh)

	EKEVO 8.5700 GL-EF3	EKEVO 9.6500 GL-EF3	EKEVO 9.8700 GL-EUF	EKEVO 9.10400 GL-EUF
Burner output in gas [kW]	830 - 6450	860 - 6950	1040 - 8500	1160 - 9570
Burner output in light oil [kW]	1100 - 6450	1100 - 6600	1800 - 8500	2550 - 9570
Gas pressure [mbar]	100 ... 500	100 ... 500	100 ... 500	100 ... 500
Fan motor	400 V - 50 Hz - 15 kW	400 V - 50 Hz - 22 kW	400 V - 50 Hz - 18,5 kW	400 V - 50 Hz - 22 kW
Oil pump motor	400 V - 50 Hz - 3 kW	400 V - 50 Hz - 3 kW	400 V - 50 Hz - 3 kW	400 V - 50 Hz - 4 kW
Auxiliary voltage	1NPE AC 230 V - 50 Hz	1NPE AC 230 V - 50 Hz	1NPE AC 230 V - 50 Hz	1NPE AC 230 V - 50 Hz
Power supply	3PE AC 400 V - 50 Hz	3PE AC 400 V - 50 Hz	3PE AC 400 V - 50 Hz	3PE AC 400 V - 50 Hz

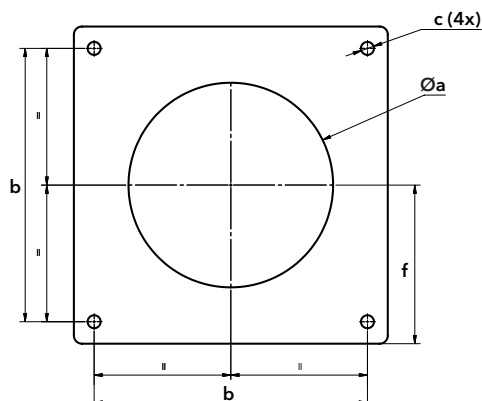


# OVERALL DIMENSIONS | DUAL FUEL RANGE



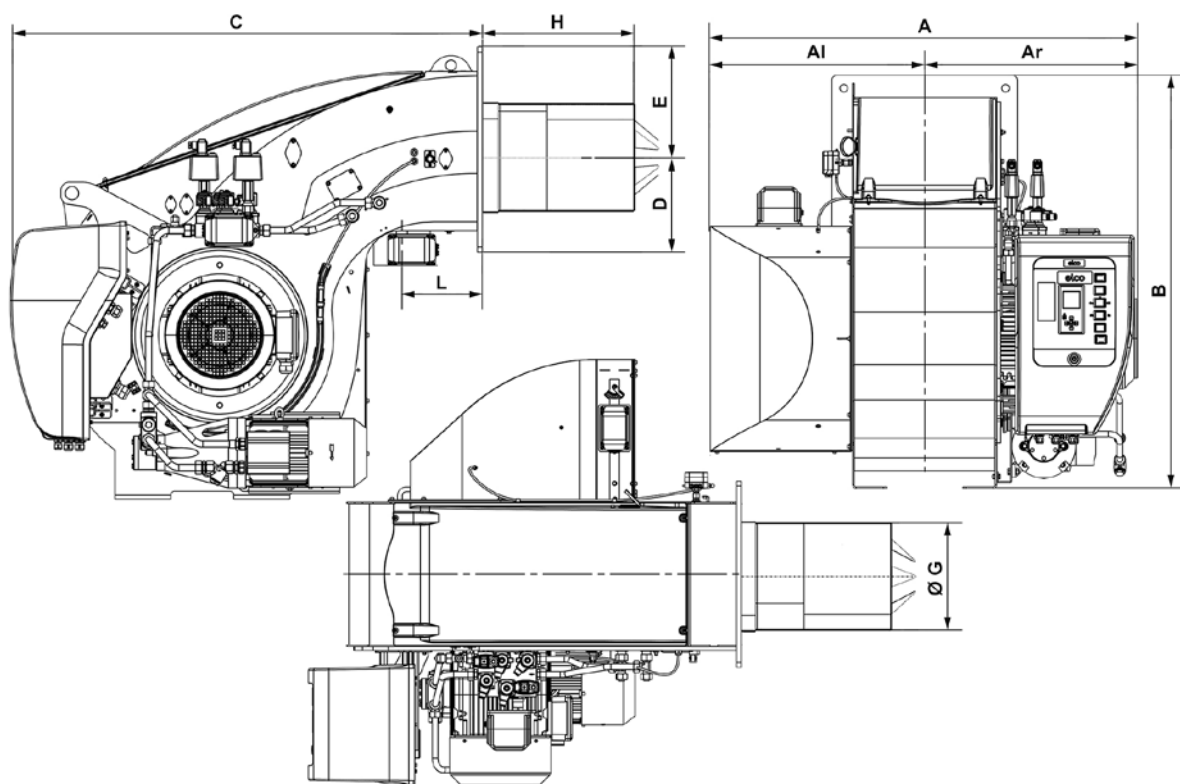
	A	Al	Ar	B	C	D	E	ØG	H			L
									KN	KM	KL	
EK EVO 6.2400 GL-EZ3	1035	479	556	812	1048	245	200	320	330	450	570	215
EK EVO 6.2900 GL-EZ3	1035	479	556	812	1048	245	200	320	330	450	570	215
EK EVO 7.3600 GL-EZ3	1093	506	587	941	1122	276	235	320	375	505	635	225
EK EVO 7.4500 GL-EZ3	1093	506	587	941	1122	276	235	370	375	505	635	225
EK EVO 6.2400 GL-E	1035	479	556	812	1048	245	200	290	330	450	570	215
EK EVO 6.2900 GL-E	1035	479	556	812	1048	245	200	310	330	450	570	215
EK EVO 7.3600 GL-E	1093	506	587	941	1122	276	235	340	375	505	635	225
EK EVO 7.4500 GL-E	1093	506	587	941	1122	276	235	370	375	505	635	225
EK EVO 6.2400/2900 GL-EF3	1035	479	556	812	1048	245	200	264	400	520	640	215
EK EVO 7.3600/4500 GL-EF3	1093	506	587	941	1122	276	235	325	420	550	680	225

## Connecting flange



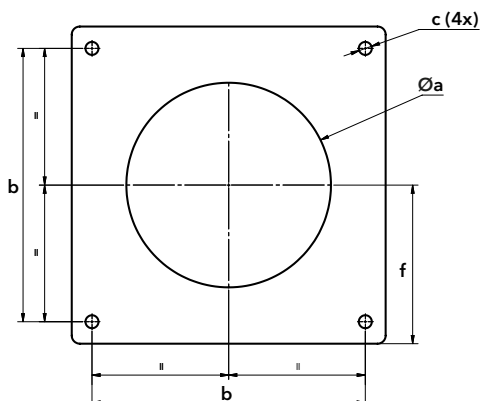
	Øa	b	c	f
EK EVO 6.2400/2900 GL-EZ3	330-340	340	M16	200
EK EVO 7.3600/4500 GL-EZ3	390-400	400	M16	235
EK EVO 6.2400 GL-E	300-340	340	M16	200
EK EVO 6.2900 GL-E	320-340	340	M16	200
EK EVO 7.3600 GL-E	350-400	400	M16	235
EK EVO 7.4500 GL-E	380-400	400	M16	235
EK EVO 6.2400/2900 GL-EF3	300-340	340	M16	200
EK EVO 7.3600/4500 GL-EF3	360-400	400	M16	235

# OVERALL DIMENSIONS | DUAL FUEL RANGE



	A	AI	Ar	B	C	D	E	ØG	H			L
									KN	KM	KL	
EK EVO 8.5800 GL-E	1336	670	666	1226	1354	391	288	400	562	702	842	230
EK EVO 8.7100 GL-E	1336	670	666	1226	1354	391	288	415	583	723	863	230
EK EVO 9.8700 GL-E	1336	670	666	1226	1354	391	288	431,5	355	505	655	230
EK EVO 9.10400 GL-E	1400	670	730	1291	1325	434	293	431,5	355	505	655	230
EK EVO 8.5700 GL-EF3	1336	670	666	1226	1354	307	288	369	528	668	808	230
EK EVO 9.6500 GL-EF3	1400	670	730	1291	1325	332	293	431,5	543	693	843	230
EK EVO 9.8700 GL-EUF	1336	670	666	1291	1325	332	293	431,5	575	725	875	230
EK EVO 9.10400 GL-EUF	1400	670	730	1291	1325	332	293	431,5	575	725	875	230

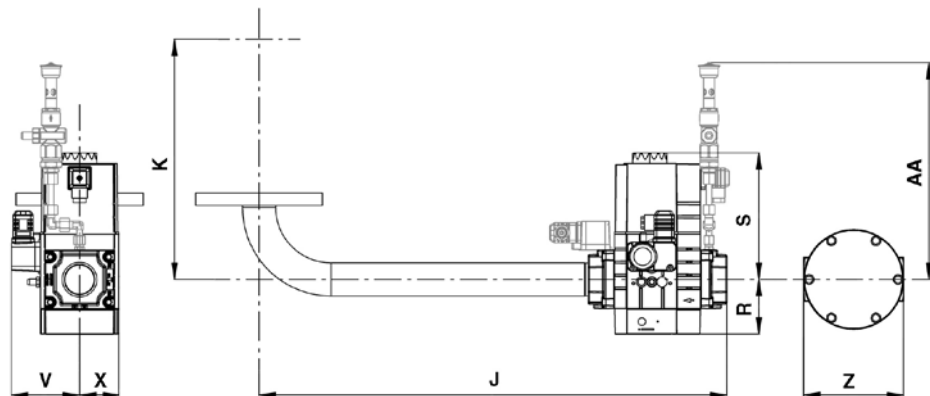
## Connecting flange



	Øa	b	c	f
EK EVO 8.5700 GL-E	430-480	505	M20	293
EK EVO 8.7100 GL-E	445-480	505	M20	293
EK EVO 9.8700 GL-E	445-480	505	M20	293
EK EVO 9.10400 GL-E	445-480	505	M20	293
EK EVO 8.5700 GL-EF3	380-410	505	M20	293
EK EVO 9.6500 GL-EF3	445-480	505	M20	293
EK EVO 9.8700 GL-EUF	445-480	505	M20	293
EK EVO 9.10400 GL-EUF	445-480	505	M20	293

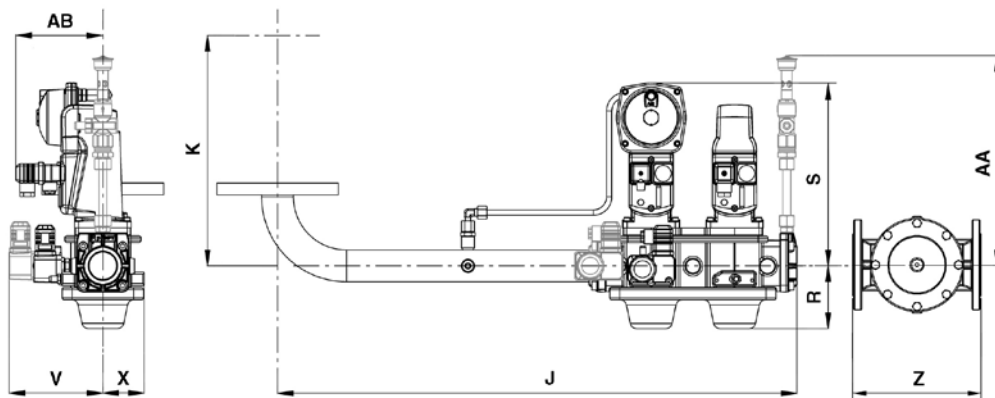
# GAS TRAINS AND FILTERS | EK EVO 6/7

## Dungs



	J	K		R	S	V	X	AA	Z
		EK EVO 6	EK EVO 7					PED*	
d1"1/2-Rp1"1/2	685	375	405	80	190	100	60	320	157
d2"-Rp2"	760	405	435	100	330	125	115	385	155
d65-DN65	795	355	385	185	250	110	100	385	245
d80-DN80	815	375	405	210	295	155	110	275	285
d100-DN100	875	375	405	250	330	165	115	275	340

## Siemens



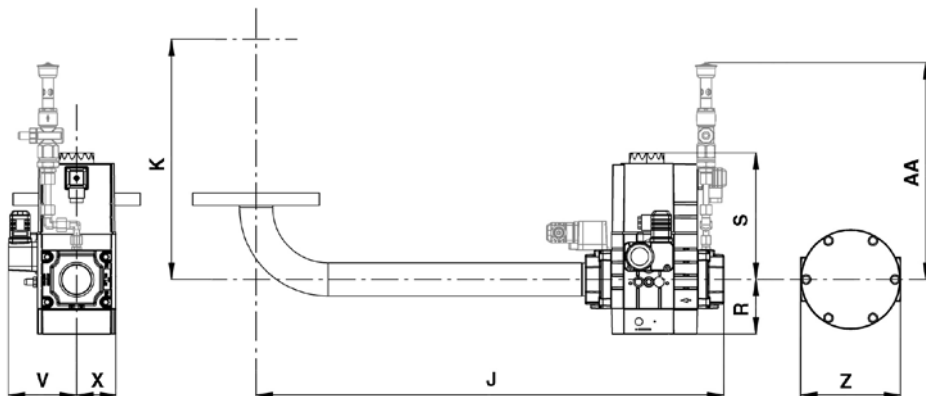
	J	K		R	S	V		X	AA	AB	Z
		EK EVO 6	EK EVO 7			PED*	PED*				
s1"1/2-DN65	795	375	405	100	285	105	145	65	320	135	245
s2"-DN80	805	405	365	105	285	105	145	100	325	135	285
s65 -DN80	795	355	385	120	305	125	125	110	365	140	285
s80-dN80	815	375	405	135	315	125	125	110	375	135	285
s100-DN100	855	375	405	145	335	145	145	125	385	135	340
s125-DN125	905	375	405	180	350	160	160	140	400	135	400

\*: equipment for continuous operation (PED option)



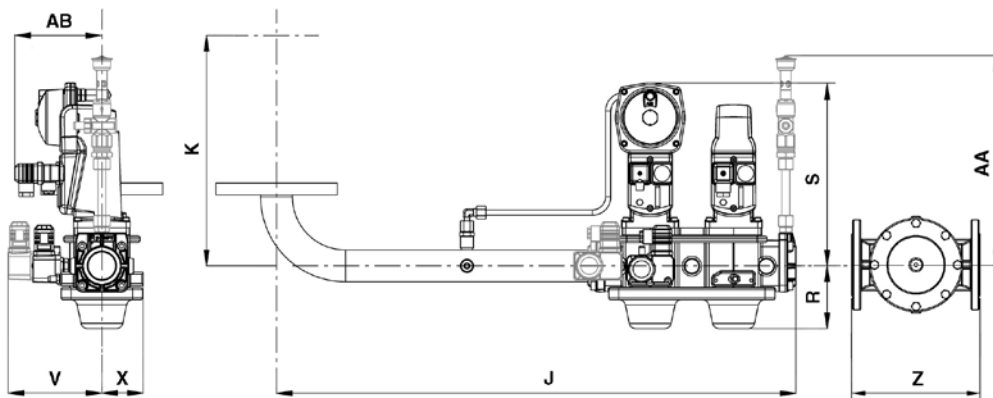
# GAS TRAINS AND FILTERS | EK EVO 8/9

## Dungs



	J	K		R	S	V	X	AA	Z
		EK EVO 8	EK EVO 9					PED*	
d2"-Rp2"	760	598	623	100	330	125	115	385	155
d65-DN65	795	598	623	185	250	110	100	385	245
d80-DN80	815	598	623	210	295	155	110	275	285
d100-DN100	875	598	623	250	330	165	115	275	340

## Siemens



	J	K		R	S	V		X	AA	AB	Z
		EK EVO 8	EK EVO 9			PED*	PED*				
s2"-DN80	805	598	623	105	285	105	145	100	325	135	285
s65-DN80	795	598	623	120	305	125	125	110	365	140	285
s80-DN80	815	598	623	135	315	125	125	110	375	135	285
s100-DN100	855	598	623	145	335	145	145	125	385	135	340
s125-DN125	905	598	623	180	350	160	160	140	400	135	400

\*: equipment for continuous operation (PED option)

## SUBSIDIARIES:

### GERMANY

ELCO GmbH  
Dreieichstraße 10  
Mörfelden-Walldorf  
Tel.: +49 (0) 6105 287-287  
Fax: +49 (0) 6105 287-199

### NETHERLANDS

Elco Burners B.V.  
Meerpaalweg, 1  
1332 BB Almere  
P.O. box 30048  
1303 AA Almere  
Tel. +31 088 69 573 11  
Fax +31 088 69 573 90

### SWITZERLAND

Elcotherm AG  
Sarganserstrasse 100  
7324 Vilters  
Tel. +41 (0)81 725 25 25  
Fax +41 (0)81 723 13 59

### AUSTRIA

ELCO Austria GmbH  
Aredstraße 16 - 18  
2544 Leobersdorf  
Tel. +43 (0)2256 639 99 32  
Fax +43 (0)2256 644 11

### UK & IRELAND

Ariston Thermo UK Ltd  
Suite 3, The Crown House  
Blackpole East, Blackpole Road,  
Worcester WR3 8SG  
Tel. +44 01905 788010  
Fax +44 01905 788011

### FRANCE

14, rue du Saule Trapu  
Parc d'activité du Moulin  
91882 Massy  
Tel. +33 01 60 13 64 64  
Fax +33 01 60 13 64 65

### ITALY

Viale Roma, 41  
28100 Novara  
Tel. +39 0732 633 590  
Fax +39 0732 633 599

### RUSSIA

Ariston Thermo RUS  
Eniseyskaya str. 1, bld 1,  
Office Center "LIRA" #415  
129344 Moscow  
Tel. +7 495 213 0300 #5700  
Fax +7 495 213 0302

### CHINA

Ariston Thermo (China) Co., Ltd.  
17A2, V-Capital Bldg  
No. 333 Xian Xia Road  
200336 Shanghai  
Tel. +86 21 6039 8691  
Fax +86 21 6039 8620

Contact us to know more  
about our products and solutions

[contact@elco-burners.com](mailto:contact@elco-burners.com)